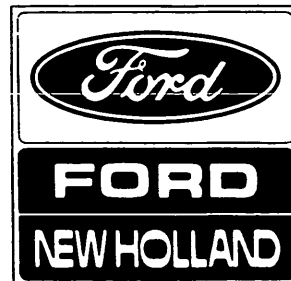


Service Parts Catalog
Liste de Pieces de Rechange
Ersatzteilliste
Catalogo Pezzi di Ricambio
Onderdelenlijst



25 OKT. 1988

MODEL 34
AND
MODEL 38
CROP CHOPPER

Catalog 5003423

ISSUE 8-88

GENERAL INFORMATION

1. Whenever the terms left or right are used, it should be understood to mean from a position facing in direction of travel.
2. Throughout this manual you find common hardware, not illustrated, but listed in the description column. The service part immediately preceding a hardware listing is the part using these particular items for mounting purposes. This hardware is not included with the service part or assembly when ordered as a replacement.
3. New Holland is continually striving to improve its products. We must, therefore, reserve the right to make improvements or changes when it becomes practical and possible to do so; without incurring any obligation to make changes or additions to the equipment sold previously.

ORDERING PARTS

1. Please submit orders on the standard Dealer Order Form and mail to your Branch Office. The form should be completely filled in and any special routing so indicated. Telephone orders, being less accurate, should be limited to "emergency situations".
2. It is advisable to consult the Service Parts Price List and/or the Historical Reference List for part number supersession, package quantity, and other pertinent information.

ALWAYS USE GENUINE NEW HOLLAND PARTS

NEW HOLLAND, 500 DILLER AVENUE, NEW HOLLAND, PA 17557

MODEL 34 AND 38 CROP CHOPPERS
CONTENTS

GROUP	PAGE NUMBER
AUGER GROUP	26, 27
AUGER HOUSING GROUP	28, 29, 30, 31
AXLE	12
AXLE SUPPORT GROUP	13
BEARING, AUGER	26, 27
BEARING, FLYWHEEL	22, 23
BEARING, ROTOR	24, 25
BEARING, WHEEL	12
CHAIN, AUGER DRIVE, FRONT	24, 25
CHAIN, AUGER DRIVE, REAR	26, 27
CLUTCH AND DRIVE SHEAVE GROUP	18, 19, 20, 21
CONTROL BOX	42, 43
CONTROL GROUP, SPOUT - MANUAL	36, 37
- ELECTRIC	38, 39, 40, 41, 42, 43
CRANK, HEIGHT ADJUSTING	14, 15
DECAL SET	3
DEFLECTOR CONTROL	40, 41
DEFLECTOR SPOUT	34, 35
DISCHARGE SPOUT	34, 35
DOOR, AUGER	28, 29, 30, 31
FLAIL	24, 25
FLYWHEEL	22, 23
GEARBOX	16, 17
HITCH	10
HOUSING GROUP	32, 33
IDLER, AUGER DRIVE CHAIN	24, 25
IDLER, ROTOR DRIVE BELT	18, 19, 20, 21
JACK	11
KNIFE	22, 23
LIFT ARM GROUP	14, 15
PADDLE	22, 23
PTO GROUP	6, 7, 8, 9
ROTOR	24, 25
ROTOR HOUSING	28, 29, 30, 31
SAFETY SHIELD	28, 29, 30, 31
SHAFT, FLYWHEEL	22, 23
SHEAR BOLT, AUGER	26, 27
SHOE	28, 29, 30, 31
SLIP CLUTCH	18, 19, 20, 21
SMV EMBLEM	13
SPOUT GROUP	34, 35
SPOUT MOTOR	40, 41
SPROCKET, AUGER	26, 27
SPROCKET, ROTOR	24, 25
TONGUE	10
TONGUE SUPPORT GROUP	13
"V" BELT	18, 19, 20, 21
WHEEL	12

ATTACHMENTS AND OPTIONAL EQUIPMENT

AUTOMATIC HITCH	45
HYDRAULIC LIFT	14, 15
HYDRAULIC SPOUT CONTROL	46
PUSH BAR, MODEL 38 ONLY	28, 29, 30, 31
SHORT FLAIL	24, 25
SHORT SPOUT	34, 35
SIX KNIFE FLYWHEEL CONVERSION	22, 23
SPOUT EXTENSION, HORIZONTAL AND VERTICAL	44
METRIC INFORMATION	4, 5
NUMERICAL PARTS INDEX	48, 49
RECOMMENDED INITIAL PARTS STOCK	47

METRIC AND INCH HARDWARE

ALLOWANCES HAVE BEEN MADE IN PUNCHED AND DRILLED HOLES TO ALLOW INTERCHANGEABILITY OF METRIC AND INCH DIMENSION HARDWARE IN FASTENING AND MOUNTING APPLICATIONS. HOWEVER, THIS INTERCHANGEABILITY DOES NOT APPLY TO TAPPED HOLES OR USING METRIC DIMENSION NUTS ON INCH CAP SCREWS, STUDS AND BOLTS. LIKEWISE, INCH DIMENSION NUTS CANNOT BE USED ON METRIC CAP SCREWS, STUDS OR BOLTS.

FOLLOWING IS A LISTING OF COMMON SIZES FOR SUBSTITUTION.

INCHES	MILLIMETERS
SCREW DIAMETER	
3/16"	5mm
1/4"	6mm
5/16"	8mm
* 3/8"	*10mm
1/2"	12mm
9/16"	14mm
5/8"	16mm
SCREW LENGTH	
5/8"	15mm
3/4"	20mm
* 1"	*25mm
1 1/4"	30mm
1 3/8"	35mm
1 1/2"	40mm
1 3/4"	45mm
2"	50mm
2 1/4"	60mm
2 3/4"	70mm
3"	80mm
3 1/2"	90mm
4"	100mm

*EXAMPLE: FOR MOST APPLICATIONS A 3/8" x 1" CAP SCREW AND NUT CAN BE REPLACED BY A 10mm x 25mm CAP SCREW AND NUT.

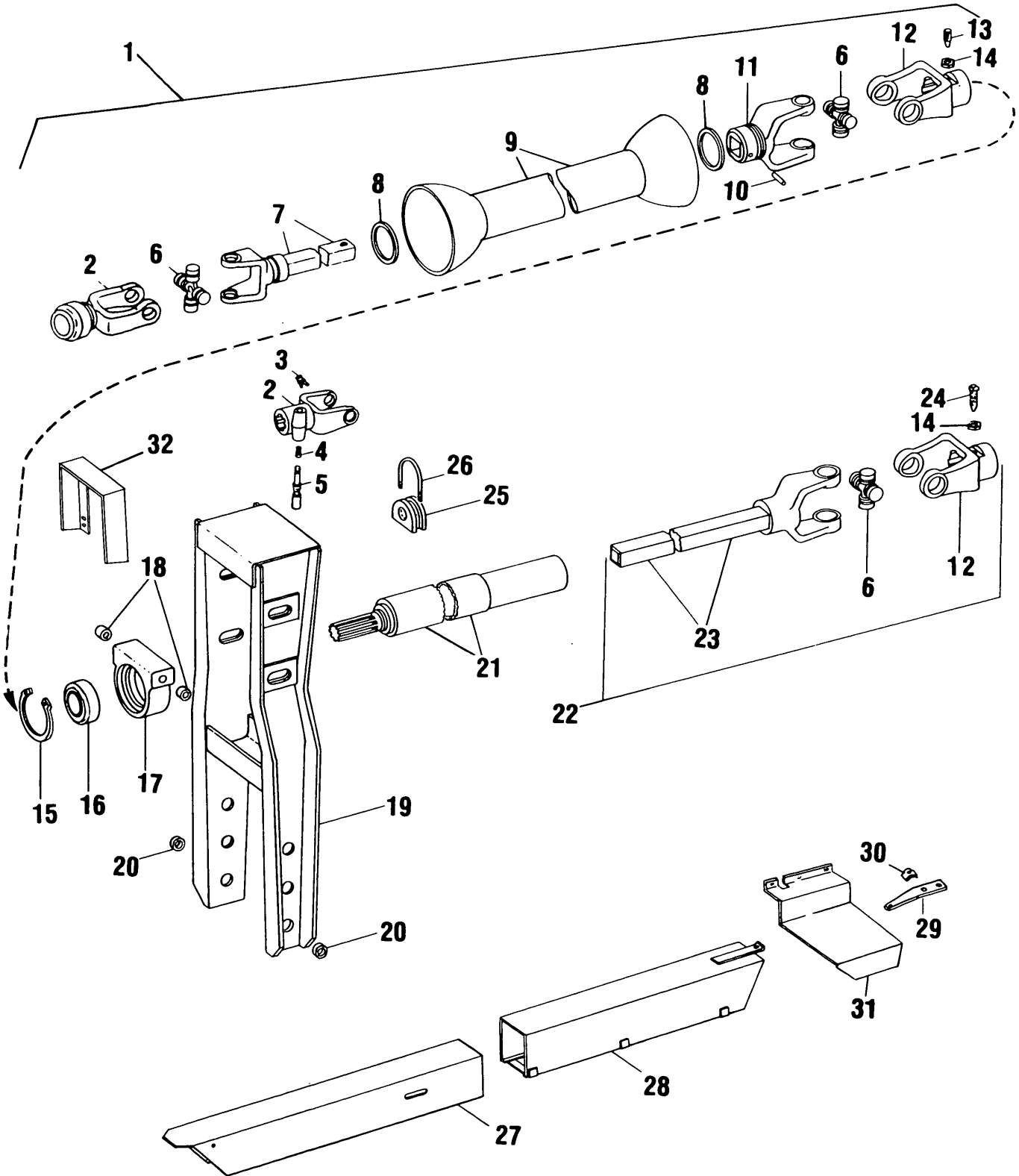
FOR ADDITIONAL SIZE INFORMATION AND POSSIBLE SUBSTITUTIONS, EITHER INCH TO METRIC OR METRIC TO INCH, PLEASE REFER TO THE CONVERSION TABLE IN THIS CATALOG.

CONVERSION TABLE

INCH FRACTIONS AND DECIMALS TO MILLIMETER EQUIVALENTS

INCHES		mm	INCHES		mm	INCHES		mm	INCHES		mm
Fract.	Dec.		Fract.	Dec.		Fract.	Dec.		Fract.	Dec.	
—	.0004	.01	—	.3	7.620	—	.7874	20	—	1.969	50
—	.001	.0250	5/16	.3125	7.938	51/64	.7969	20.241	2	2.000	50.8
—	.0039	.10	—	.3150	8	13/16	.8125	20.638	2 1/8	2.125	54
—	.005	.127	21/64	.3281	8.334	—	.8268	21	—	2.165	55
—	.0079	.2	—	.3346	8.5	53/64	.8281	21.034	2 1/4	2.250	57.2
—	.0098	.25	11/32	.3438	8.731	27/32	.8438	21.431	—	2.362	60
—	.01	.254	—	.3543	9	55/64	.8594	21.828	2 3/8	2.375	60.3
—	.0118	.3	23/64	.3594	9.128	—	.8662	22	2 1/2	2.500	63.5
1/64	.0156	.397	—	.3740	9.5	7/8	.8750	22.225	—	2.559	65
—	.0157	.4	3/8	.375	9.525	57/64	.8906	22.622	2 5/8	2.625	66.7
—	.0197	.5	25/64	.3906	9.922	—	.9	22.860	2 3/4	2.750	69.9
—	.0236	.6	—	.3937	10	—	.9055	23	—	2.756	70
—	.025	.635	—	.4	10.160	29/32	.9063	23.019	2 7/8	2.875	73
—	.0276	.7	13/32	.4062	10.319	59/64	.9219	23.416	—	2.953	75
—	.0295	.75	—	.4134	10.5	15/16	.9375	23.813	3	3.000	76.2
1/32	.0313	.794	27/64	.4219	10.716	—	.9449	24	—	3.150	80
—	.0315	.8	—	.4331	11	61/64	.9531	24.209	3 1/4	3.250	82.6
—	.0354	.9	7/16	.4375	11.113	31/32	.9688	24.606	—	3.346	85
—	.0394	1	29/64	.4531	11.509	—	.9843	25	3 1/2	3.500	88.9
3/64	.0469	1.191	15/32	.4688	11.906	1	1.000	25.400	—	3.543	90
—	.0472	1.2	—	.4724	12	—	1.024	26	—	3.740	95
—	.05	1.270	31/64	.4844	12.303	1 1/16	1.062	26.988	3 3/4	3.750	95.3
—	.0551	1.4	—	.4921	12.5	—	1.063	27	—	3.937	100
—	.0591	1.5	1/2	.5	12.700	—	1.102	28	4	4.000	101.6
1/16	.0625	1.588	—	.5118	13	1 1/8	1.125	28.575	—	4.331	110
—	.0669	1.7	33/64	.5156	13.097	—	1.142	29	4 1/2	4.500	114.3
—	.075	1.905	17/32	.5326	13.494	—	1.181	30	—	4.724	120
5/64	.0781	1.984	—	.5315	13.5	1 3/16	1.188	30.16	5	5.000	127
—	.0787	2	35/64	.5469	13.891	—	1.221	31	—	5.118	130
—	.0906	2.3	—	.5512	14	1 1/4	1.250	31.75	5 1/2	5.500	139.7
3/32	.0938	2.381	9/16	.5625	14.288	—	1.260	32	—	5.512	140
—	.0984	2.5	—	.571	14.5	—	1.299	33	—	5.906	150
—	.1	2.540	37/64	.5781	14.684	1 5/16	1.312	33.34	6	6.000	152.4
—	.1024	2.6	—	.5906	15	—	1.339	34	—	6.299	160
7/64	.1093	2.776	19/32	.5938	15.081	1 3/8	1.375	34.93	6 1/2	6.500	165.1
—	.1181	3	—	.6	15.240	—	1.378	35	7	7.000	177.8
1/8	.125	3.175	39/64	.6094	15.478	—	1.417	36	—	7.087	180
—	.1378	3.5	—	.6103	15.5	1 7/16	1.438	36.51	7 1/2	7.500	190.5
9/64	.1406	3.572	5/8	.6250	15.875	—	1.457	37	—	7.874	200
5/32	.1563	3.969	—	.6299	16	—	1.496	38	8	8.000	203.2
—	.1575	4	41/64	.6406	16.272	1 1/2	1.500	38.10	8 1/2	8.500	215.9
11/64	.1719	4.366	—	.6496	16.5	—	1.535	39	—	8.661	220
—	.1772	4.5	21/32	.6563	16.669	1 9/16	1.562	39.69	9	9.000	228.6
3/16	.1875	4.763	—	.6693	17	—	1.575	40	—	9.449	240
—	.1969	5	43/64	.6719	17.066	—	1.614	41	9 1/2	9.500	241.3
—	.2	5.080	11/16	.6875	17.463	1 5/8	1.625	41.28	—	9.843	250
13/64	.2031	5.159	—	.6890	17.5	—	1.654	42	10	10.000	254
—	.2165	5.5	—	.7	17.780	1 11/16	1.688	42.86	—	10.236	260
7/32	.2188	5.556	45/64	.7031	17.859	—	1.693	43	11	11.000	279.4
15/64	.2344	5.953	—	.7087	18	—	1.732	44	—	11.024	280
—	.2362	6	23/32	.7188	18.256	1 3/4	1.750	44.45	—	11.811	300
1/4	.25	6.350	—	.7283	18.5	—	1.772	45	12	12.000	304.8
—	.2559	6.5	47/64	.7344	18.653	—	1.811	46	13	13.000	330.2
17/64	.2656	6.747	—	.7480	19	1 13/16	1.813	46.04	—	13.780	350
—	.2756	7	3/4	.75	19.050	—	1.850	47	14	14.000	355.6
9/32	.2813	7.144	49/64	.7656	19.447	1 7/8	1.875	47.63	15	15.000	381
—	.2953	7.5	—	.7677	19.5	—	1.890	48	—	15.748	400
19/64	.2969	7.541	25/32	.7813	19.844	—	1.929	49	16	16.000	406.4

MODEL 34 AND 38 CROP CHOPPERS
PTO GROUP



MODEL 34 AND 38 CROP CHOPPERS
PTO GROUP

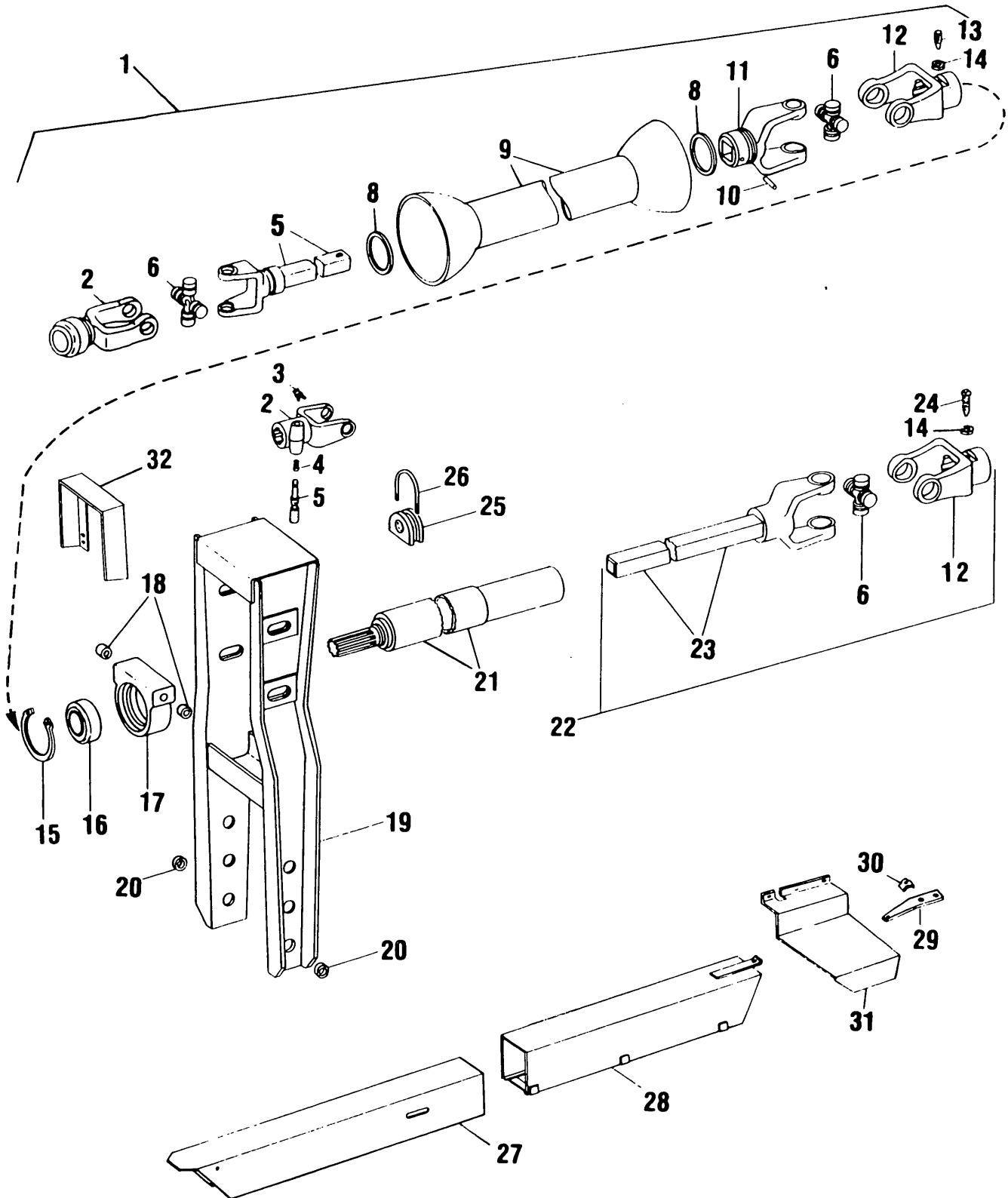
Ref. No.	Part No.	No. Used	Description
1	856621	1	PTO Assembly, Front --- Replaces 175485
2	(k) 34780	1	Quick Detachable Yoke Assembly (Includes Ref. Nos. 3, 4, 5)
	(l) 855141	1	Yoke Assembly, Slide Collar
		1	N.S.S. Yoke (NEAPCO)
		3	855717 Ball (NEAPCO)
		1	855718 Spring (NEAPCO)
		1	855716 Collar (NEAPCO)
		1	855719 Snap Ring (NEAPCO)
		1	N.S.S. Yoke (HAYES-DANA)
		2	856121 Locking Segment (HAYES-DANA)
		1	856120 Spring (HAYES-DANA)
		1	856122 Slide Collar (HAYES-DANA)
		1	27503 Snap Ring (HAYES-DANA)
3	(k) 40305	1	"X" Washer
4	(k) 236068	1	Yoke Pin
5	(k) 26981	1	Spring
6	29214	3	Spider and Bearing Assembly
7	9600732	1	Yoke and Shaft Weld Assembly --- Replaces 175487
8	(k) 47941	2	Nylon Bearing
	(l) 579113	2	Nylon Bearing
9	198219	1	Shield, One Piece
10	81825	1	Groove Pin, Type A, 3/8" x 2"
11	9600731	1	Yoke --- Replaces 175485
12	29212	2	Yoke
13	34418	1	Special Set Screw
14	87309	2	Jam Nut, 1/2" UNF
15	29852	1	Retaining Ring
16	47192	1	Bearing
17	44322	1	Bearing Housing
		2	88551 Cap Screw, Hex Head, Grade 5, 1/2" x 1 3/4"
		2	80700 Washer, 1/2"
		2	80679 Lockwasher, 1/2"
18	36436	2	Spacer
19	704303	1	Bearing Support Weld Assembly
		1	88554 Cap Screw, Hex Head, Grade 5, 1/2" x 7 1/2"
		2	80700 Washer, 1/2"
		1	80679 Lockwasher, 1/2"
		1	280431 Nut, Grade 5, 1/2"
20	25936	2	Spacer
21	46655	1	PTO Slip Joint Tube Weld Assembly
		1	87408 Lube Fitting, 1/4", Short
22	46661	1	PTO Slip Joint Shaft Assembly (Includes Ref. Nos. 6, 12, 14, 23, 24)
23	46751	1	Yoke and Shaft Weld Assembly
24	608186	1	Special Set Screw
25	28110	1	Rope Guide
26	28114	1	"U" Bolt
		2	80684 Lockwasher, #10
		2	87304 Nut, #10
27	46669	1	Guard, Front
28	46663	1	Guard, Rear
29	46685	1	Guard Support
		2	87872 Cap Screw, Hex Head, Grade 5, 5/16" x 3/4"
		2	80681 Lockwasher, 5/16"

(k) Used on and below Serial No. 632927

(l) Used on and above Serial No. 632928

CONTINUED

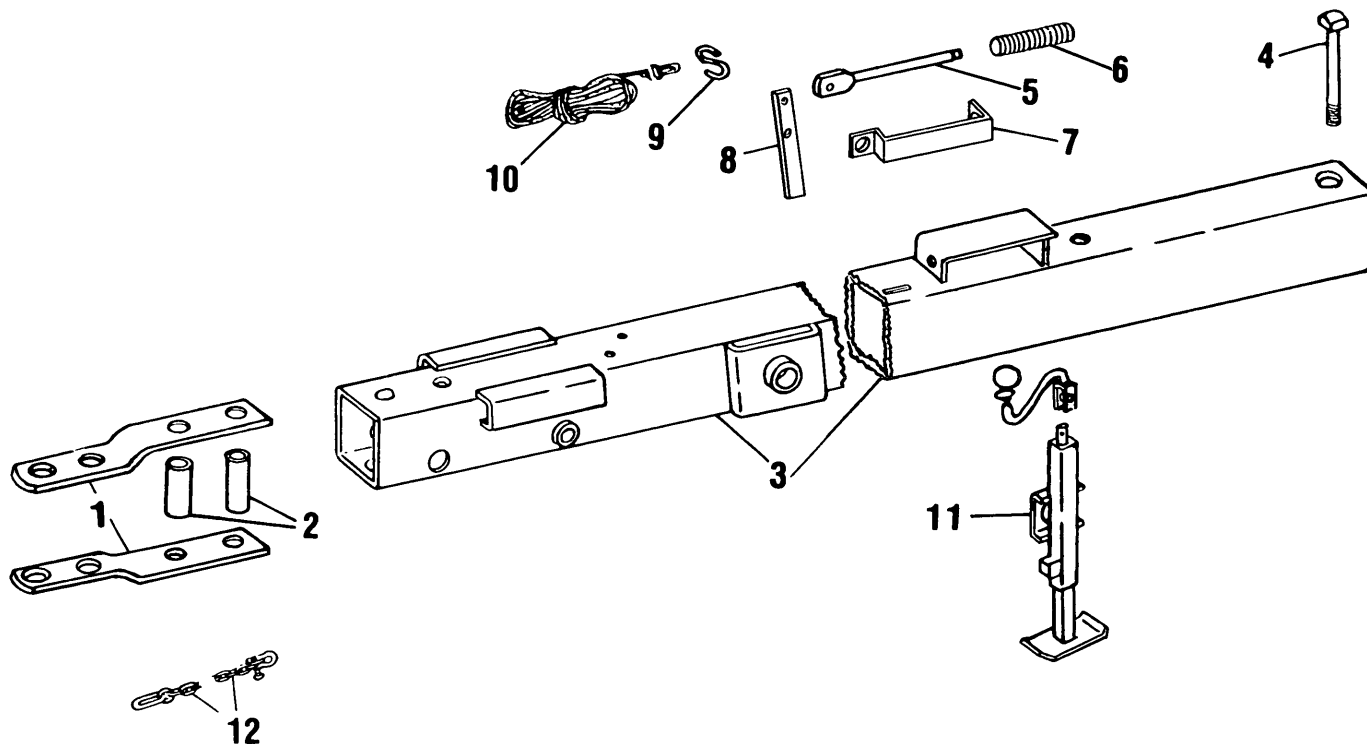
MODEL 34 AND 38 CROP CHOPPERS
PTO GROUP (CONTINUED)



MODEL 34 AND 38 CROP CHOPPERS
PTO GROUP (CONTINUED)

Ref. No.	Part No.	No. Used	Description
30	48206	1	Spring
			1 87868 Carriage Bolt, Grade 5, 1/2" x 1 1/4"
31	702764	1	1 88871 Locknut, Grade C, 1/2"
			Shield
			3 280497 Bolt, Rd Hd, Sh. Sq. Neck, Gr. 5, 5/16" x 3/4"
32	784243	1	3 80681 Lockwasher, 5/16"
			3 84943 Nut, 5/16"
			Shield
			4 88206 Cap Screw, Hex Head, Grade 5, 3/8" x 1"
			4 87016 Washer, 3/8"
			4 247780 Locknut, USR, 3/8"

MODEL 34 AND 38 CROP CHOPPERS
TONGUE GROUP



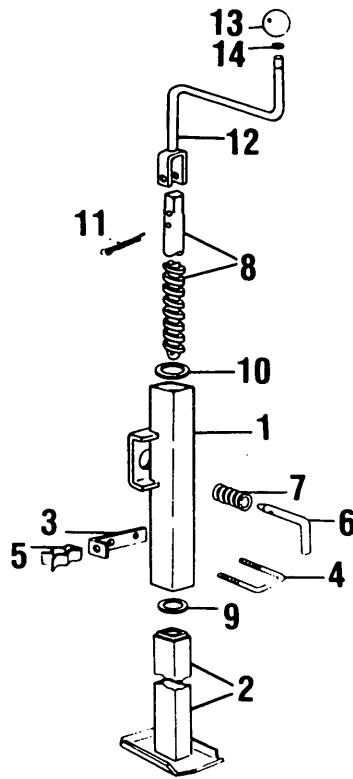
Ref. No.	Part No.	No. Used	Description
1	857026	2	Hitch --- Replaces 134837 2 88264 Cap Screw, Hex Head, Grade 5, 5/8" x 6" 2 84057 Lockwasher, 5/8" 2 84947 Nut, 5/8"
2	36464	2	Spacer
3	857027	1	Tongue Weld Assembly --- Replaces 265059
4	72871	1	Tongue Bolt 2 87381 Washer, 3/4" 1 87435 Slotted Hex Nut, 3/4" 1 80708 Cotter Pin, 1/8" x 1 1/2"
5	851968	1	Latch Pin --- Replaces 680113
6	26392	1	Spring
7	169666	1	Bracket
8	126162	1	Lever 1 88011 Cap Screw, Hex Head, Grade 5, 3/8" x 1 1/4" 1 87016 Washer, 3/8" 1 88902 Locknut, Grade C, 3/8"
9	34455	1	"S" Hook
10	49956	1	Rope Assembly
11	(c) 128437	1	Jack Assembly (Refer to Separate Breakdown)
	(d) 626246	1	Jack Assembly (Refer to Separate Breakdown) 1 88395 Spring Pin, 5/16" x 3"
12	854994	1	Safety Tow Chain Kit AR 855499 Safety Chain Hardware Kit

AR - As Required

(c) Used on and below Serial No. 572997

(d) Used on and above Serial No. 572998

MODEL 34 AND 38 CROP CHOPPERS
JACK ASSEMBLY



Ref. No.	Part No.	No. Used	Description	
1	(c) 128437	1	Jack Assembly (Includes Ref. Nos. 1 thru 11)	
	(d) 626246	1	Jack Assembly (Includes Ref. Nos. 1 thru 11)	
	(c) 122483	1	Jack Tube Weld Assembly, Outer	
	(d) 626502	1	Jack Tube Weld Assembly, Outer	
2	(m) 528735	1	Jack Tube Weld Assembly, Inner	
	(n) 241296	1	Jack Tube Weld Assembly, Inner	
3	(c) 217392	1	Bracket	
4	(c) 217391	1	"U" Bolt	
		2	280129 Locknut, Grade C, 1/4"	
5	(c) 163902	1	Spring Clip	
		1	88542 Cap Screw, Hex Head, Grade 5, 1/4" x 1/2"	
6	128375	1	Jack Pin	
		1	87455 Spring Pin, 1/8" x 1"	
7	26538	1	Spring	
8	218784	1	Jack Screw Weld Assembly	
		1	87406 Roll Pin, 1/4" x 1 1/2"	
9	50600	1	Thrust Washer	
10	(c) 84239	1	Washer, 3/4"	
	(d) 67469	1	Washer, 3/4"	
11	(c) 87398	1	Cotter Pin, 3/16" x 1 1/4"	
12	(c) 169702	1	Crank Weld Assembly	
		(d) 622265	1	Crank Weld Assembly
		1	88436 Cap Screw, Hex Head, Grade 5, 3/8" x 2"	
		2	80702 Washer, 3/8"	
13	(c) 129344	1	Knob	
		1	88902 Locknut, Grade C, 3/8"	
14	(c) 129345	1	Retaining Ring	

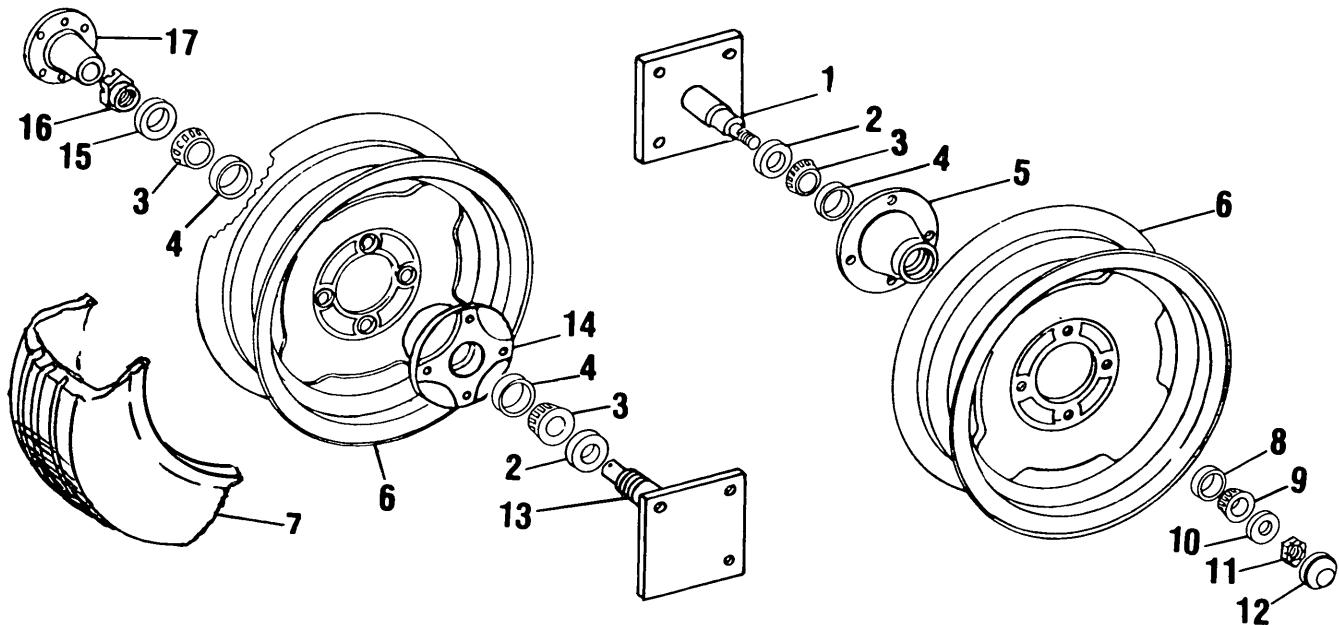
(c) Used on and below Serial No. 572997

(d) Used on and above Serial No. 572998

(m) Used on and below Serial No. 707735

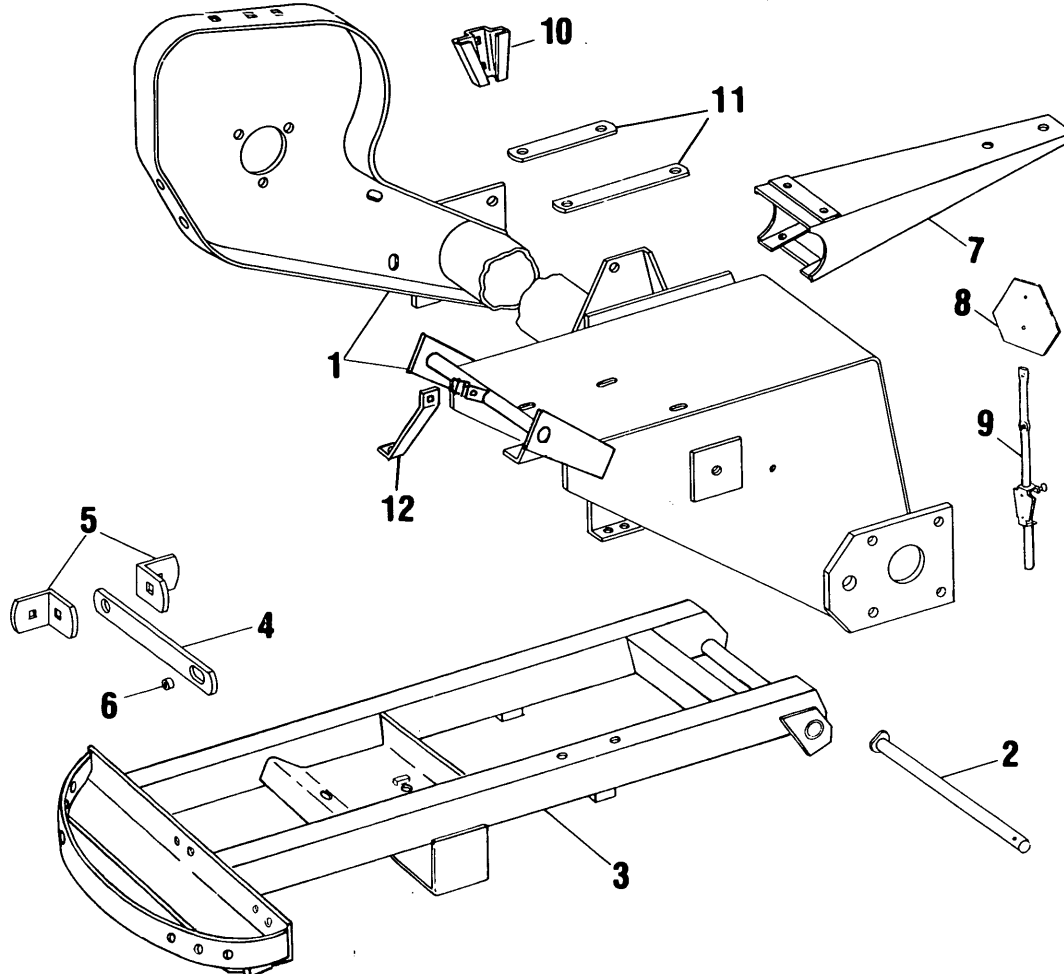
(n) Used on and above Serial No. 707736

MODEL 34 AND 38 CROP CHOPPERS
SPINDLE GROUP



Ref. No.	Part No.	No. Used	Description
1	285294	1	Spindle Weld Assembly, LH 4 88551 Cap Screw, Hex Head, Grade 5, 1/2" x 1 3/4" 4 80679 Lockwasher, 1/2" 4 280431 Nut, Grade 5, 1/2"
2	36727	2	Seal
3	36726	3	Bearing Cone
4	36723	3	Bearing Cup
5	132158	1	Wheel Hub, LH
6	217229	2	Disc Wheel, for 25 x 7.50-15 Tire 8 32383 Wheel Bolt 2 196033 Tubeless Tire Valve
7	712742	2	Tire, Terra Rib Thread, 8 Ply, 25 x 7.50-15 (Purchase Locally)
8	36725	1	Bearing Cup
9	36724	1	Bearing Cone
10	87381	1	Washer, 3/4"
11	88886	1	Slotted Nut, 3/4" UNF 1 87398 Cotter Pin, 3/16" x 1 1/4"
12	249130	1	Hub Cap
13	285148	1	Spindle Weld Assembly, RH 4 88551 Cap Screw, Hex Head, Grade 5, 1/2" x 1 3/4" 4 80679 Lockwasher, 1/2" 4 280431 Nut, Grade 5, 1/2"
14	46871	1	Wheel Hub 1 87414 Lube Fitting, 1/4"-28
15	46876	1	Oil Seal
16	50256	1	Slotted Nut 1 87400 Cotter Pin, 3/16" x 2"
17	134489	1	Spindle Support 1 80710 Lube Fitting, 1/8" NPT 1 80752 Cotter Pin, 1/4" x 2 1/2" 6 88206 Cap Screw, Hex Head, Grade 5, 3/8" x 1" 6 80680 Lockwasher, 3/8" 6 84944 Nut, 3/8"

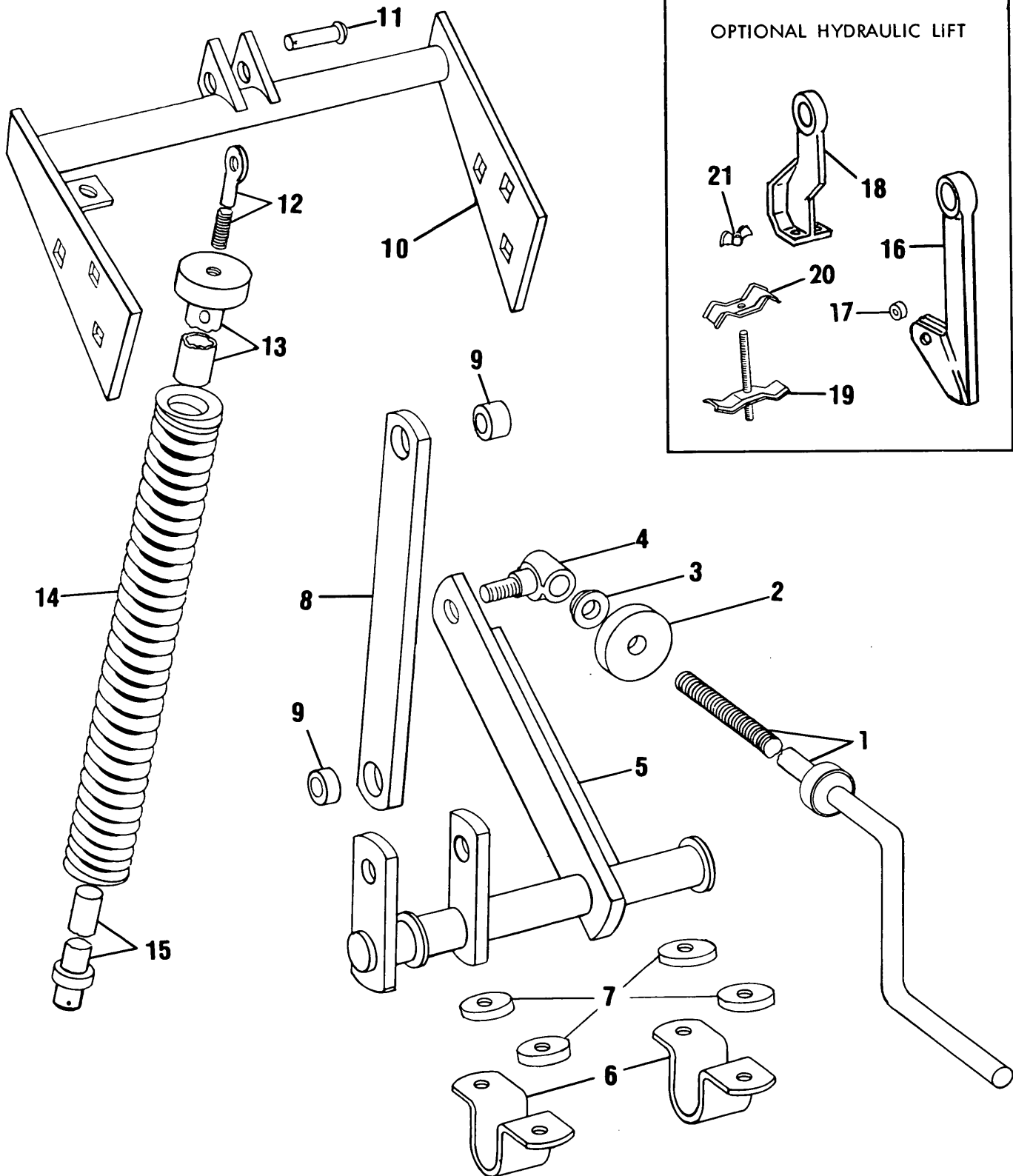
MODEL 34 AND 38 CROP CHOPPERS
AXLE AND TONGUE SUPPORT GROUP



Ref. No.	Part No.	No. Used	Description
1	46984	1	Axle Frame Weld Assembly - Model 34
	782316	1	Axle Frame Weld Assembly - Model 38 --- Repl. 50685 & 710369
2	46689	1	Lift Frame Shaft Weld Assembly
		1	87577 Roll Pin, 3/8" x 2"
3	857310	1	Tongue Support Frame Weld Assembly --- Replaces 134464
4	46680	1	Bracket - Model 34
	56211	1	Bracket - Model 38
		1	280420 Carriage Bolt, Grade 5, 1/2" x 1 1/2"
		1	87689 Cap Screw, Hex Head, Grade 5, 1/2" x 1 1/2"
		1	87364 Washer, 1/2" SAE
		2	80679 Lockwasher, 1/2"
		2	280431 Nut, Grade 5, 1/2"
5	46679	2	Bracket
		1	87868 Carriage Bolt, Grade 5, 1/2" x 1 1/4"
		2	80679 Lockwasher, 1/2"
		2	280431 Nut, Grade 5, 1/2"
6	46678	2	Spacer
7	47036	AR	Wagon Hitch Weld Assembly
		5	280486 Carriage Bolt, Grade 5, 1/2" x 1"
		5	80679 Lockwasher, 1/2"
		5	280431 Nut, Grade 5, 1/2"
8	189759	1	SMV Emblem
9	195036	1	SMV Pole Mount Assembly
10	847590	1	Socket, Welded to Ref. No. 1
11		AR	Gearbox Mounting Shims (Refer to Gearbox Assembly)
12	710638	1	Brace

AR - As Required

MODEL 34 AND 38 CROP CHOPPERS
LIFT ARM AND SPRING GROUP



MODEL 34 AND 38 CROP CHOPPERS
LIFT ARM AND SPRING GROUP

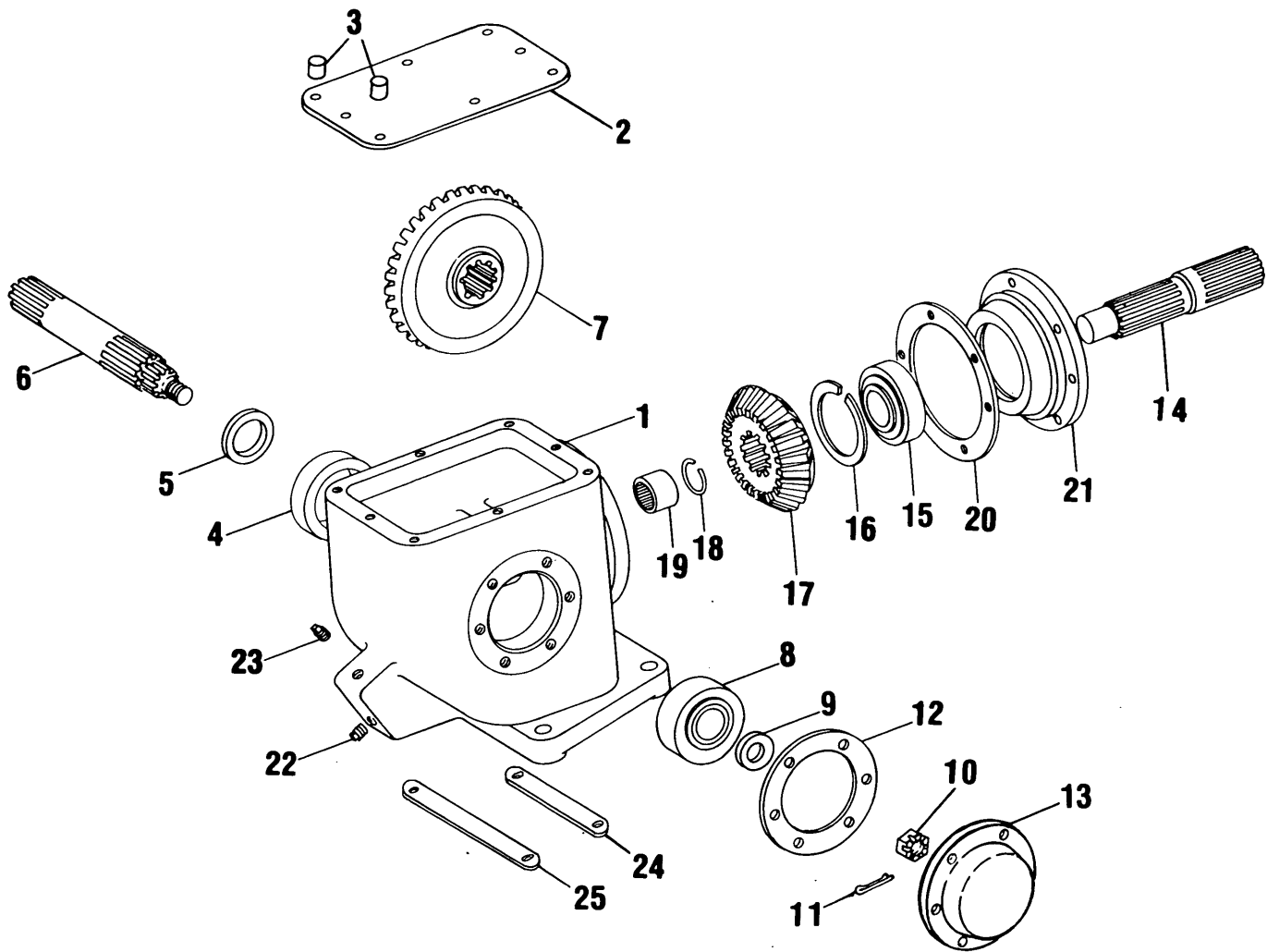
Ref. No.	Part No.	No. Used	Description
1	46765	1	Crank Weld Assembly 1 84924 Roll Pin, 5/32" x 1 1/4"
2	46658	1	Bearing
3	46657	1	Tapered Collar
4	46724	1	Adjusting Nut 1 87365 Washer, 5/8" SAE 1 84057 Lockwasher, 5/8" 1 280374 Nut, Grade 5, 5/8"
5	65918	1	Lift Arm Weld Assembly
6	46688	2	Lift Arm Bearing 2 87415 Lube Fitting, 1/4"-28, 90° 4 87996 Cap Screw, Hex Head, Grade 5, 1/2" x 4 1/2" 4 80679 Lockwasher, 1/2" 4 280431 Nut, Grade 5, 1/2"
7	26312	4	Washer
8	46695	1	Lift Arm 1 88692 Cap Screw, Hex Head, Grade 5, 3/4" x 1 1/2" 1 84988 Bolt, Round Head, Short Square Neck, 3/4" x 2 1/2" 2 87340 Lockwasher, 3/4" 1 280954 Nut, Grade 5, 3/4"
9	115040	2	Spacer
10	*	1	Tube Weld Assembly 6 280499 Bolt, Round Head, Short Square Neck, Grade 5, 1/2" x 1" 6 80679 Lockwasher, 1/2" 6 280431 Nut, Grade 5, 1/2"
11	25464	1	Drilled Rivet 2 87364 Washer, 1/2" 1 87397 Cotter Pin, 3/16" x 1"
12	52475	1	Adjusting Rod --- Replaces 36658 1 87128 Spring Pin, 1/8" x 5/8"
13	46670	1	Outer Shaft and Nut Weld Assembly
14	46830	1	Lift Spring - Model 34
	56235	1	Lift Spring - Model 38
15	46675	1	Spring Shaft Weld Assembly 1 80754 Cotter Pin, 3/16" x 1 1/2"

THE FOLLOWING PARTS ARE INCLUDED IN OPTIONAL HYDRAULIC LIFT BUNDLE 208927

16	47170	1	Lift Arm 1 88555 Cap Screw, Hex Head, Grade 5, 5/8" x 2" 1 84057 Lockwasher, 5/8" 1 84910 Locknut, Grade C, 5/8"
17	47179	1	Spacer, 11/16" ID x 7/8" OD x 17/32" (17.5mm x 22.2mm x 13.5mm)
18	47180	1	Bracket 2 88551 Cap Screw, Hex Head, Grade 5, 1/2" x 1 3/4" 2 80679 Lockwasher, 1/2" 2 280431 Nut, Grade 5, 1/2"
19	42369	1	Clamp Weld Assembly 1 80680 Lockwasher, 3/8" 1 84944 Nut, 3/8"
20	42365	1	Clamp
21	80840	1	Wing Nut, 3/8"

* Tube Weld Assembly 63553 is no longer available. P/N 782316 Axle Frame Weld Assembly must be ordered.

MODEL 34 AND 38 CROP CHOPPERS
GEARBOX ASSEMBLY



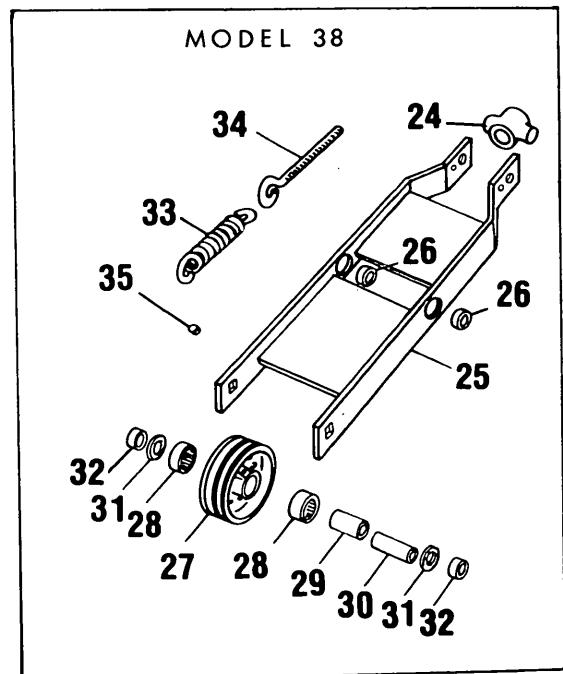
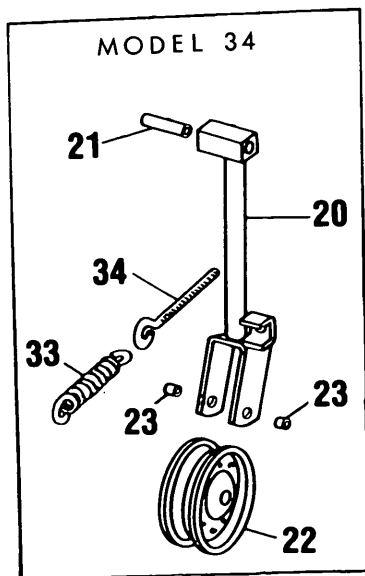
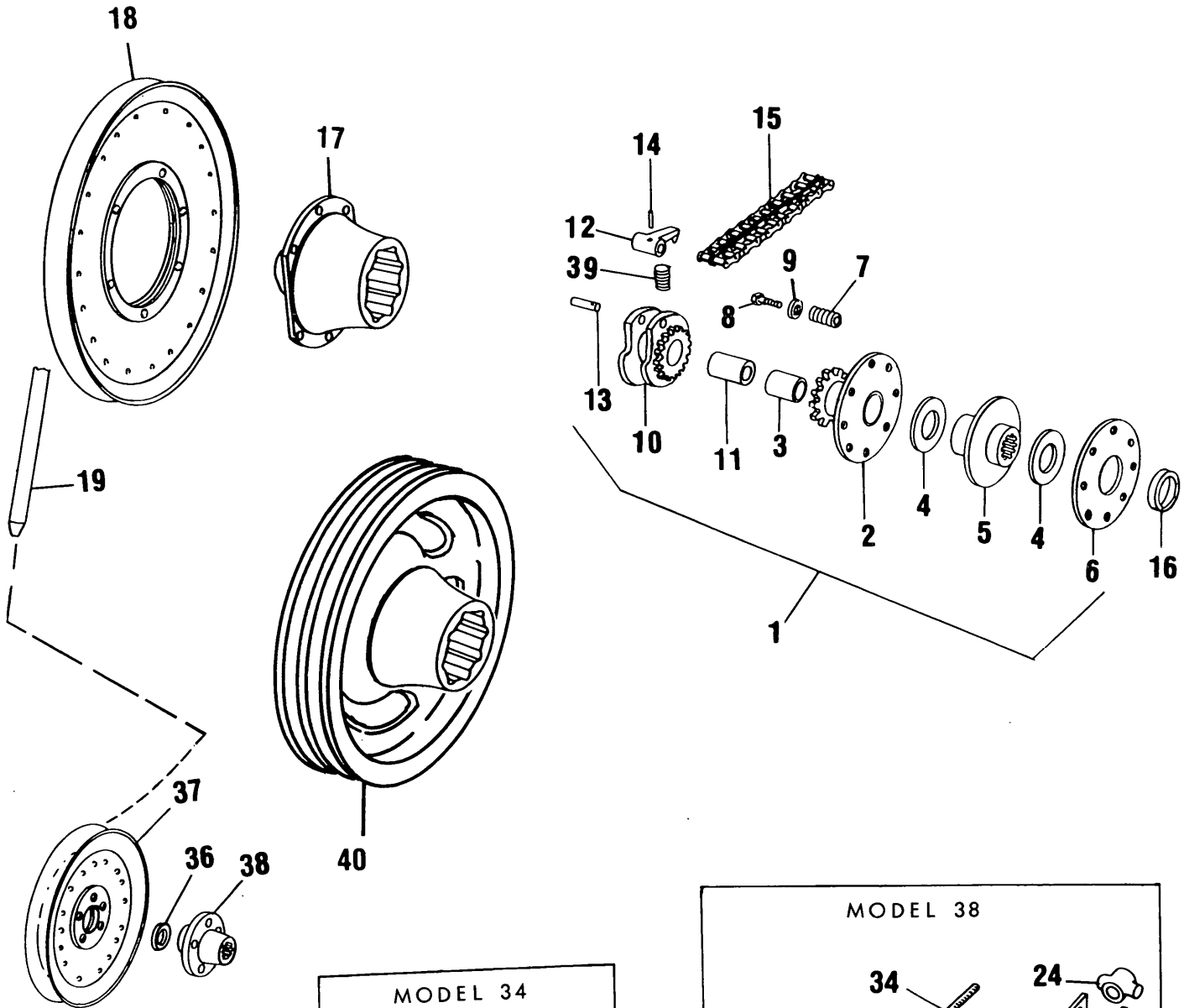
MODEL 34 AND 38 CROP CHOPPERS
GEARBOX ASSEMBLY

Ref. No.	Part No.	No. Used	Description
	703681	1	Gearbox Assembly (Includes Ref. Nos. 1 thru 23) --- Replaces 285300
		4	280264 Bolt, Round Head, Short Square Neck, Grade 5, 1/2" x 2"
		4	80679 Lockwasher, 1/2"
		4	280431 Nut, Grade 5, 1/2"
1	* 703680	1	Housing --- Replaces 285267
		1	280250 Cotter Pin, 3/32" x 3/4"
2	46803	1	Cover
		6	87872 Cap Screw, Hex Head, Grade 5, 5/16" x 3/4"
		6	80681 Lockwasher, 5/16"
3	516914	2	Bushing
		2	87657 Cap Screw, Hex Head, Grade 5, 5/16" x 1 1/4"
		2	80681 Lockwasher, 5/16"
4	46807	1	Needle Bearing
5	46886	1	Oil Seal
6	179908	1	Input Shaft
7	56323	1	Bevel Gear
8	46805	1	Ball Bearing
9	141781	1	Special Washer
10	88886	1	Slotted Hex Nut, 3/4"-16
11	87397	1	Cotter Pin, 3/16" x 1"
12	46922	1	Gasket
13	179914	1	Bearing Cap
		6	88543 Cap Screw, Hex Head, Grade 5, 5/16" x 1"
		6	80681 Lockwasher, 5/16"
14	703679	1	Output Shaft --- Replaces 46732
15	47192	1	Ball Bearing
16	46809	1	Retaining Ring
17	56324	1	Bevel Pinion
18	46810	1	Retaining Ring
19	* 37326	1	Needle Bearing, 3/4" Long, 1.250" OD (19mm x 31.75mm)
	* 272850	1	Needle Bearing, 1" Long, 1.312" OD (25.4mm x 33.3mm)
20	46932	AR	Shim, .003" Thick (.076mm)
	46790	AR	Shim, .005" Thick (.127mm)
	46933	AR	Shim, .007" Thick (.178mm)
21	46722	1	Bearing Mount
		6	88543 Cap Screw, Hex Head, Grade 5, 5/16" x 1"
		6	80681 Lockwasher, 5/16"
22	80709	1	Pipe Plug, Square Head, 1/8"
23	80781	1	Pipe Plug, Square Head, 3/8"
24	46686	AR	Shim, 6" Long, .003" Thick (152mm x .076mm)
	49065	AR	Shim, 6" Long, .015" Thick (152mm x .381mm)
	49066	AR	Shim, 6" Long, .036" Thick (152mm x .914mm)
	46778	AR	Shim, 6" Long, .060" Thick (152mm x 1.542mm)
25	46684	AR	Shim, 7 1/2" Long, .003" Thick (190mm x .076mm)
	49063	AR	Shim, 7 1/2" Long, .015" Thick (190mm x .381mm)
	49064	AR	Shim, 7 1/2" Long, .036" Thick (190mm x .914mm)
	46779	AR	Shim, 7 1/2" Long, .060" Thick (190mm x 1.542mm)

AR - As Required

* New Housing 703680 requires 272850 Needle Bearing. Check old Bearing before ordering replacement.

MODEL 34 AND 38 CROP CHOPPERS
CLUTCH, DRIVE SHEAVE AND IDLER GROUP



MODEL 34 AND 38 CROP CHOPPERS
CLUTCH, DRIVE SHEAVE AND IDLER GROUP

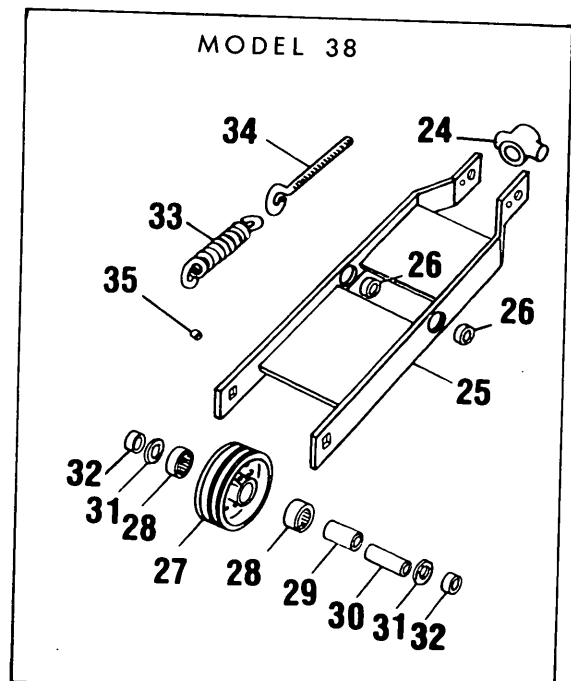
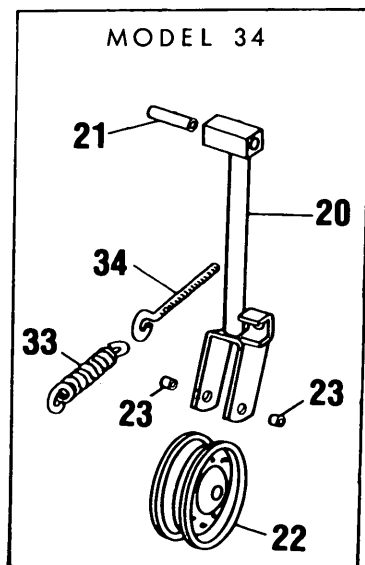
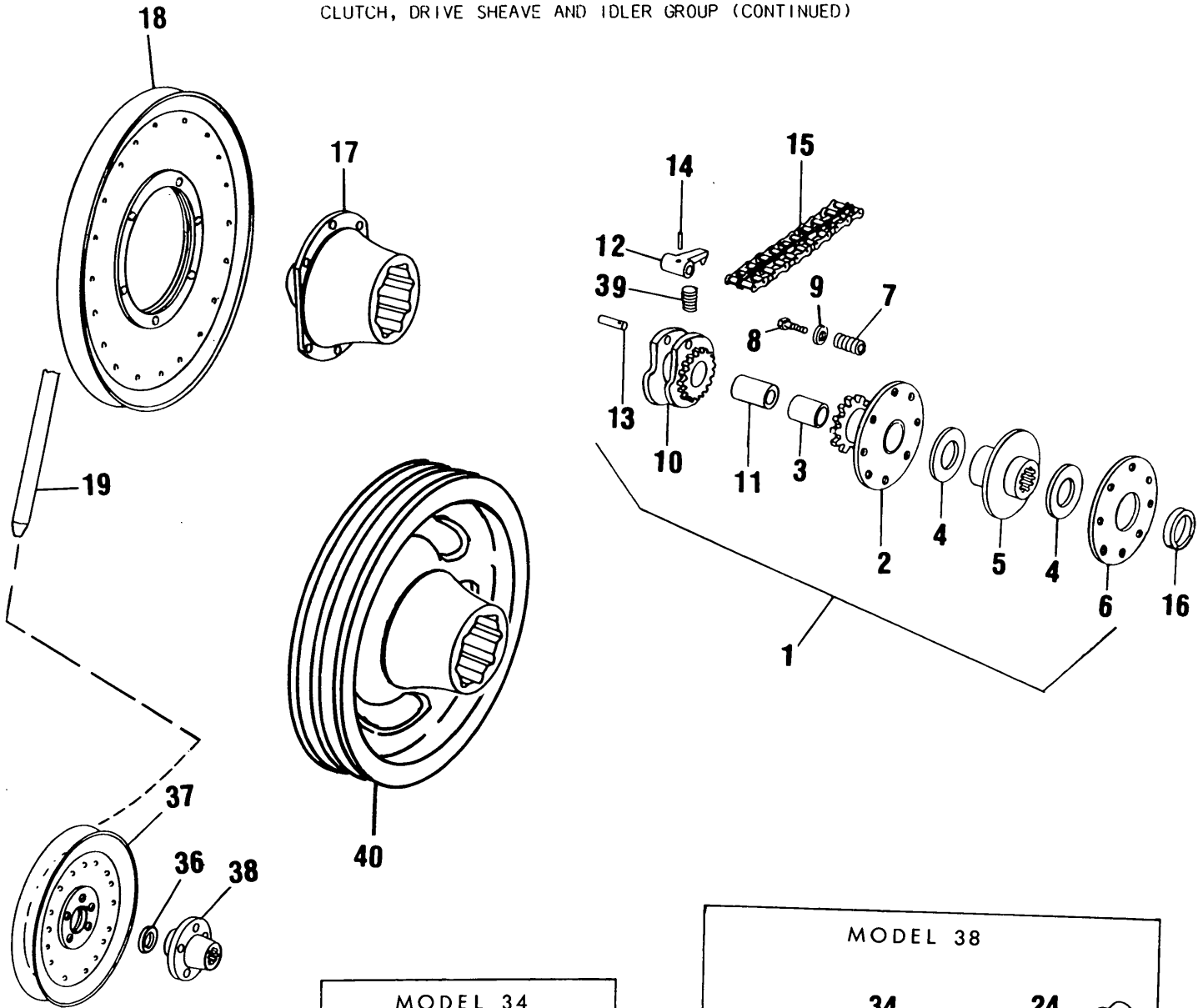
Ref. No.	Part No.	No. Used		Description
		34	38	
1	705430	1	1	Slip Clutch Assembly (Includes Ref. Nos. 2 thru 15)
2	285298	1	1	Plate and Sprocket Assembly (Includes Ref. No. 3)
3	126760	1	1	Bushing
4	127434	2	2	Friction Disc
5	627771	1	1	Clutch Plate Weld Assembly --- Replaces 166342
6	144179	1	1	Clutch Plate
7	32307	8	8	Spring
8	87936	8	8	Cap Screw, Hex Head, Grade 5, 3/8" x 2 1/2"
9	87016	8	8	Washer, 3/8" SAE
10	705422	1	1	Sprocket and Holder Assembly (Includes Ref. No. 11) 1 87414 Lube Fitting, 1/4"-28
11	46826	1	1	Bushing
12	218527	2	2	Clutch Dog
13	46789	2	2	Pin
14	87455	2	2	Spring Pin, 1/8" x 1"
15	46791	1	1	Coupling Chain Assembly, RC #60-2 AR 45217 Coupler Link
16	39374	1	1	Spacer
17	(c) 705423	1	1	Clutch Housing 1 87125 Woodruff Key, #TX, 3/8" x 2 3/4"
18	56389	1		Sheave Weld Assembly, Single Groove
	(c) 56236		1	Double Groove Sheave, Cast 6 87872 Cap Screw, Hex Head, Grade 5, 5/16" x 3/4" 6 80681 Lockwasher, 5/16"
19	64218	1		"V" Belt, 82.5" (2095mm) Long, Super Construction
	56213		1	"V" Belt Set (Matched Set of 2)
	56212		2	"V" Belt (Single Belt)
20	58131	1		Idler Pivot Weld Assembly 1 88043 Cap Screw, Hex Head, Grade 5, 1/2" x 3 1/4" 1 87364 Washer, 1/2" 1 80679 Lockwasher, 1/2" 1 280431 Nut, Grade 5, 1/2"
21	48036	1		Spacer
22	58106	1		Idler Pulley 1 87972 Cap Screw, Hex Head, Grade 5, 1/2" x 2 1/2" 1 80679 Lockwasher, 1/2" 1 280431 Nut, Grade 5, 1/2"
23	52024	2		Spacer
24	179035		1	Swivel
25	178297		1	Idler Arm Weld Assembly 2 88011 Cap Screw, Hex Head, Grade 5, 3/8" x 1 1/4" 2 87016 Washer, 3/8" SAE 2 247780 Locknut, USR, 3/8"
26	103060		2	Bushing
27	178299		1	Idler Pulley and Bearing Assembly, 2 Groove (Includes Ref. No. 28) 1 87414 Lube Fitting, 1/4"-28 1 88177 Bolt, Round Head, Short Square Neck, 1/2" x 3 3/4" 2 80700 Washer, 1/2" 1 80679 Lockwasher, 1/2" 1 280431 Nut, Grade 5, 1/2"
28	36433		2	Needle Bearing
29	36434		1	Inner Race

AR - As Required

(c) Used on and below Serial No. 572997

CONTINUED

MODELS 34 AND 38 CROP CHOPPERS
CLUTCH, DRIVE SHEAVE AND IDLER GROUP (CONTINUED)

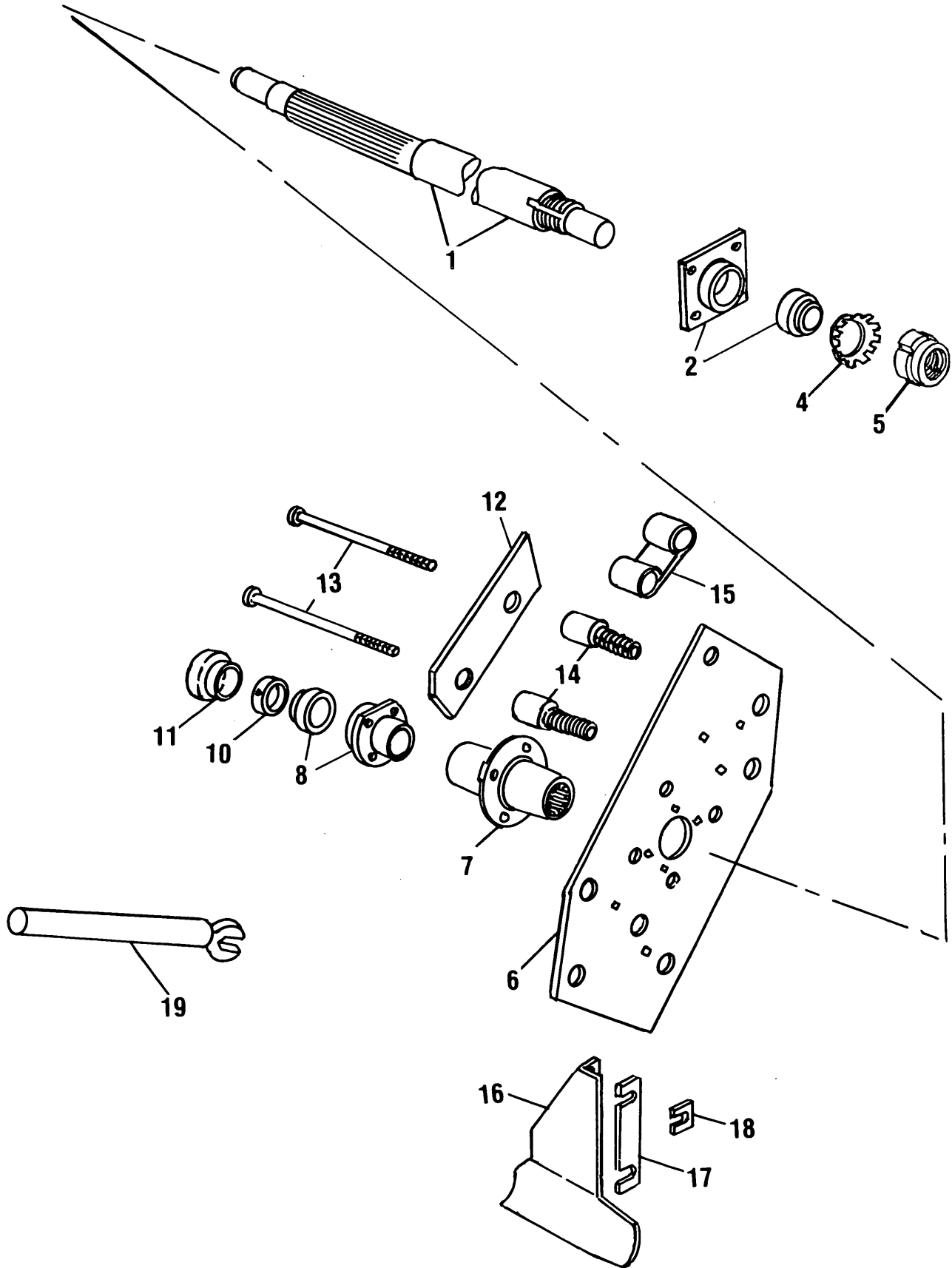


MODELS 34 AND 38 CROP CHOPPERS
CLUTCH, DRIVE SHEAVE AND IDLER GROUP (CONTINUED)

Ref. No.	Part No.	No. Used		Description
		34	38	
30	48921		1	Spacer
31	56832		2	Washer
32	43414		2	Spacer
33	34490	1		Spring
	788354		1	Spring --- Replaces 10013
34	36835	1		Eyebolt
	138539		1	Eyebolt
			2	84944 Nut, 3/8"
35	25457		1	Spacer, 1/4" Long
			1	88543 Cap Screw, Hex Head, Grade 5, 5/16" x 1"
			1	80664 Washer, 5/16"
			1	80681 Lockwasher, 5/16"
			1	84943 Nut, 5/16"
36	141781		1	Washer
37	64974	1		Rotor Drive Sheave
			5	88543 Cap Screw, Hex Head, Grade 5, 5/16" x 1"
			5	80681 Lockwasher, 5/16"
			5	84943 Nut, 5/16"
	195056		1	Rotor Drive Sheave, Tapered Spline ID
			1	84860 Hex Castellated Nut, 3/4" UNF
			1	80754 Cotter Pin, 3/16" x 1 1/2"
38	52338	1		Splined Hub
			1	80752 Cotter Pin, 1/4" x 2 1/2"
39	704452	1	1	Spring
40	(d) 697331		1	Hub and Sheave
			1	87125 Woodruff Key, #TX, 3/8" x 2 3/4"

(d) Used on and above Serial No. 572998

MODEL 34 AND 38 CROP CHOPPERS
FLYWHEEL GROUP



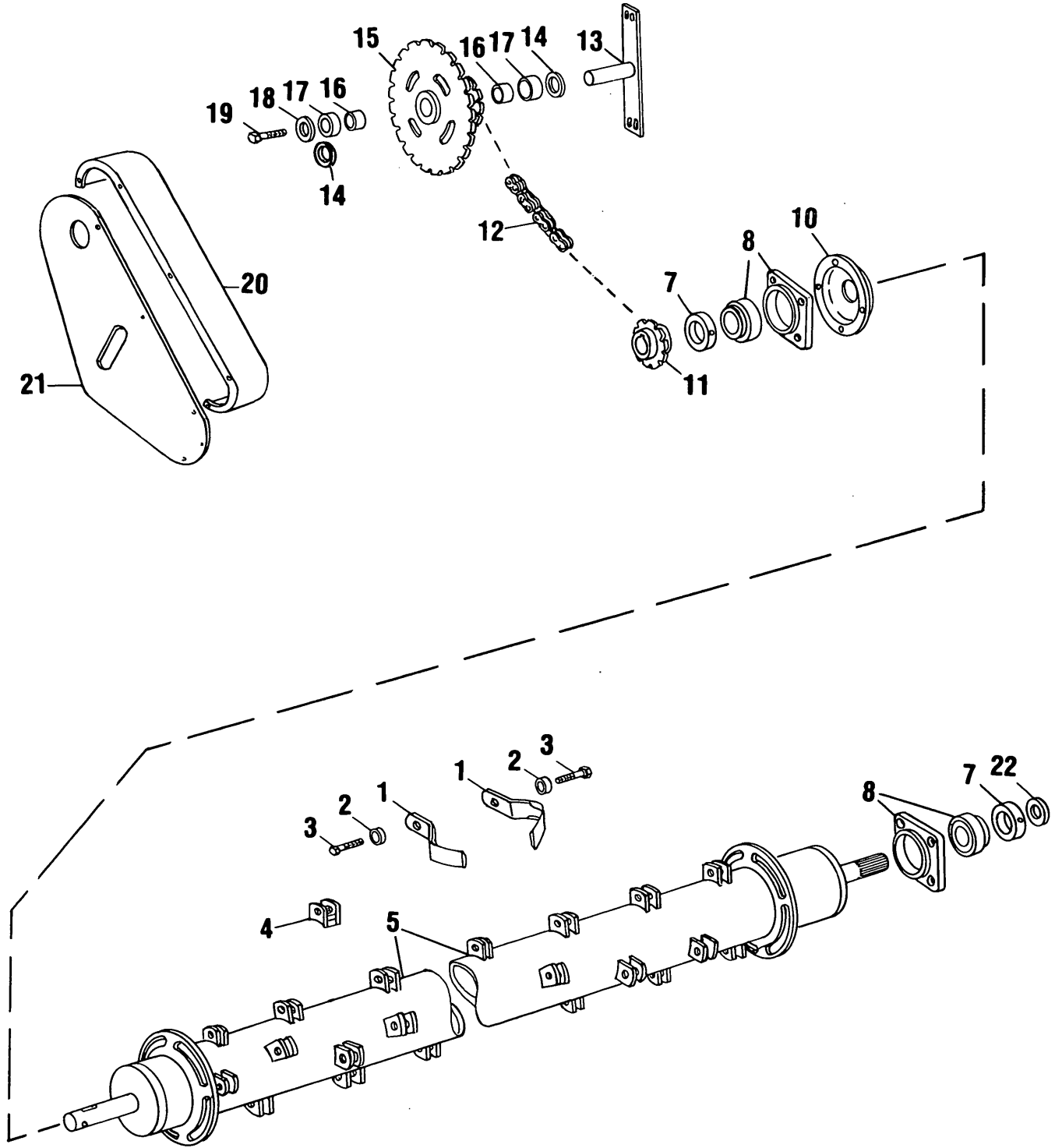
MODEL 34 AND 38 CROP CHOPPERS
FLYWHEEL GROUP

Ref. No.	Part No.	No. Used	Description
1	58067	1	Drive Shaft
2	691790	1	Bearing and Housing Assembly, Selective Fit, 1 11/16" (42.86mm) ID
			1 87569 Lube Fitting, 1/4"-28, 45°
			4 87670 Cap Screw, Hex Head, Grade 5, 1/2" x 1 1/4"
			4 80679 Lockwasher, 1/2"
4	58105	1	Lockwasher, Bearing
5	58104	1	Locknut, Bearing
6	46836	1	Flywheel Plate
			4 88062 Cap Screw, Hex Head, Grade 5, 5/8" x 1 1/2"
			4 84057 Lockwasher, 5/8"
7	134836	1	Hub
			1 47111 Special Set Screw
			1 84970 Jam Nut, 1/2"
8	691791	1	Bearing and Housing Assembly, Selective Fit, 1 1/8" (28.575mm) ID
			1 87414 Lube Fitting, 1/4"-28
			3 88206 Cap Screw, Hex Head, Grade 5, 3/8" x 1"
			3 80680 Lockwasher, 3/8"
10	45876	1	Bearing Collar
11	249127	1	Hub Cap
12	46811	3	Knife
13	48688	* 6	Knife Bolt
			* 6 87880 Lockwasher, Flat, Internal Tooth, 3/4"
			* 6 280954 Nut, Grade 5, 3/4"
14	46833	* 6	Knife Support
			*12 87604 Jam Nut, 1 1/2" UNF
15	579816	3	Deflector
16	65696	3	Paddle Weld Assembly
			AR 280834 Bolt, Round Head, Short Square Neck, Grade 5, 5/8" x 2"
			AR 280466 Bolt, Round Head, Short Square Neck, Grade 5, 5/8" x 2 1/2"
			AR 84057 Lockwasher, 5/8"
			6 88942 Nut, 5/8", Heavy
			AR 87937 Cap Screw, Hex Head, Grade 8, 5/8" x 2"
			12 570950 Washer, Special
17	48645	AR	Shim, .060" Thick (1.52mm)
	66961	AR	Shim, .036" Thick (.9mm)
18	48689	AR	Shim, .060" Thick (1.52mm)
	66271	AR	Shim, .036" Thick (.9mm)
19	46781	1	Cutterhead Wrench

AR - As Required

* Quantities listed are doubled when using 208928 Six Knife Kit.

MODEL 34 AND 38 CROP CHOPPERS
ROTOR GROUP



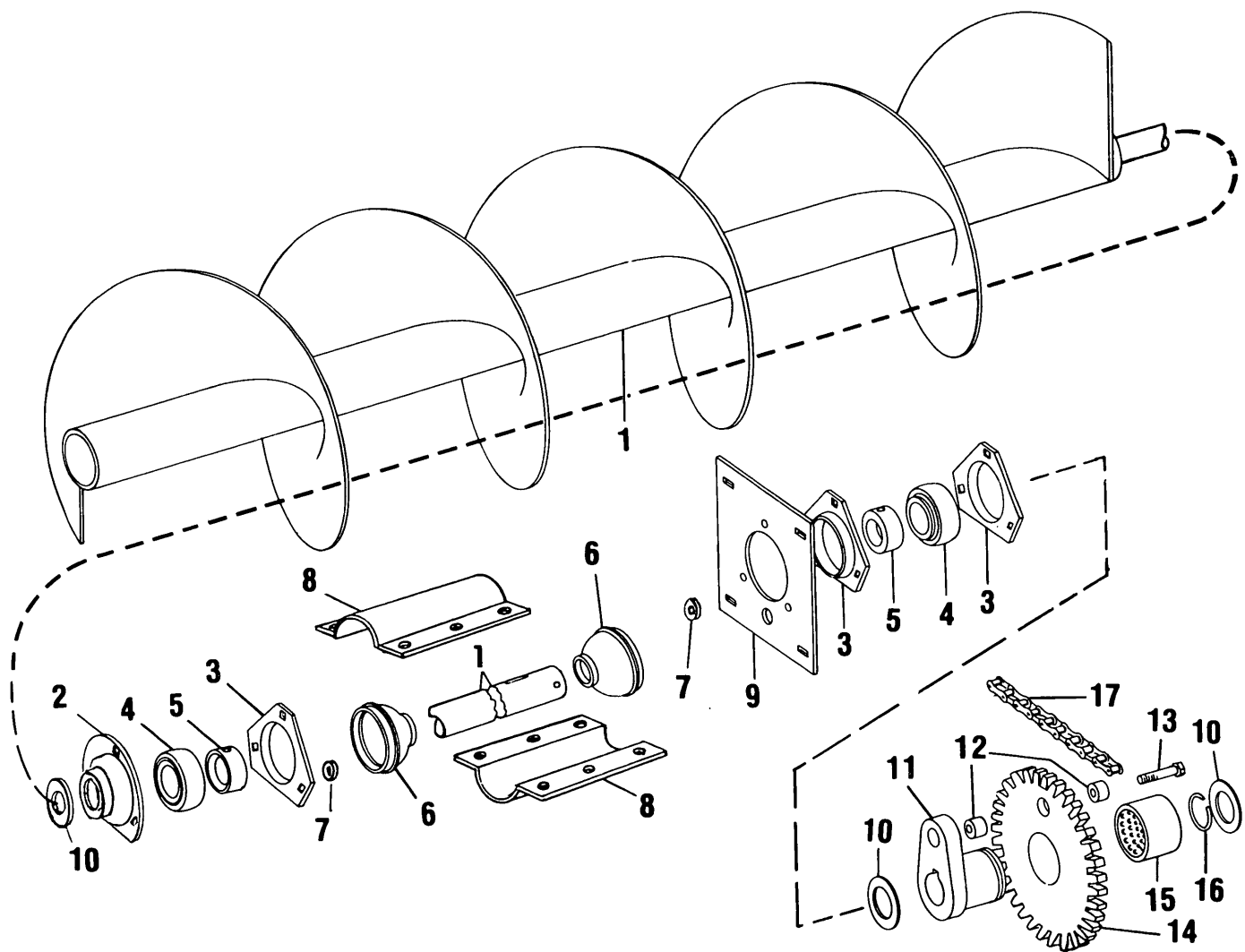
MODEL 34 AND 38 CROP CHOPPERS
 ROTOR GROUP

Ref. No.	Part No.	No. Used		Description
		34	38	
1	49945	32	40	Flail, Reversible, Standard
	49946	AR	AR	Flail, Reversible, Short
2	46710	32	40	Spacer
3	167053	32	40	Special Bolt, Grade 5
				AR 130358 Special Washer
				AR 47832 Locknut, Grade C, 5/8"
4	# 49928	32	40	Clip Bracket Weld Assembly
5	52092	1		Rotor Weld Assembly
	195077		1	Rotor Weld Assembly
7	45393	2	2	Collar
8	691788	2	2	Bearing and Housing Assembly, Selective Fit
				2 80717 Lube Fitting, 1/8" NPT, 45°
				8 87689 Cap Screw, Hex Head, Grade 5, 1/2" x 1 1/2"
				16 65319 Hardened Washer
				8 80679 Lockwasher, 1/2"
				8 280431 Nut, Grade 5, 1/2"
10	63646	1	1	Shield
11	49973	1		Sprocket, 13 Teeth
	56237		1	Sprocket, 16 Teeth
				1 84304 Woodruff Key, #16 x 3/16" x 1 1/8"
				1 80752 Cotter Pin, 1/4" x 2 1/2"
12	49968	1		Auger Drive Chain, Front, RC #2040, 39 Total Pitches
	56364		1	Auger Drive Chain, Front, RC #2040, 40 Total Pitches
				AR 25809 Roller Link
				AR 25813 Connector Link
				AR 25818 Offset Link
13	49967	1	1	Shaft and Support Weld Assembly
				4 280503 Bolt, Round Head, Short Square Neck, Grade 5, 3/8" x 1"
				4 247780 Locknut, USR, 3/8"
14	27696	AR	AR	Washer
15	56014	1	1	Idle Sprocket Assembly (Includes Ref. Nos. 16 and 17)
16	46889	2	2	Needle Bearing
17	36310	2	2	Oil Seal
18	25939	1	1	Special Washer
19	27965	1	1	Drilled Cap Screw
				1 87415 Lube Fitting, 1/4"-28, 90°
				1 80679 Lockwasher, 1/2"
20	46734	1	1	Chain Cover
				5 280497 Bolt, Round Head, Short Square Neck, Grade 5, 5/16" x 3/4"
				5 80681 Lockwasher, 5/16"
				5 84943 Nut, 5/16"
21	46735	1	1	Side Plate Weld Assembly
				6 88542 Cap Screw, Hex Head, Grade 5, 1/4" x 1/2"
				6 87361 Washer, 1/4" SAE
				6 80682 Lockwasher, 1/4"
22	141781		1	Washer

AR - As Required

NOTE: When replacing 49928 be sure to maintain the proper balance of the Rotor Weld Assembly.

MODEL 34 AND 38 CROP CHOPPERS
AUGER GROUP

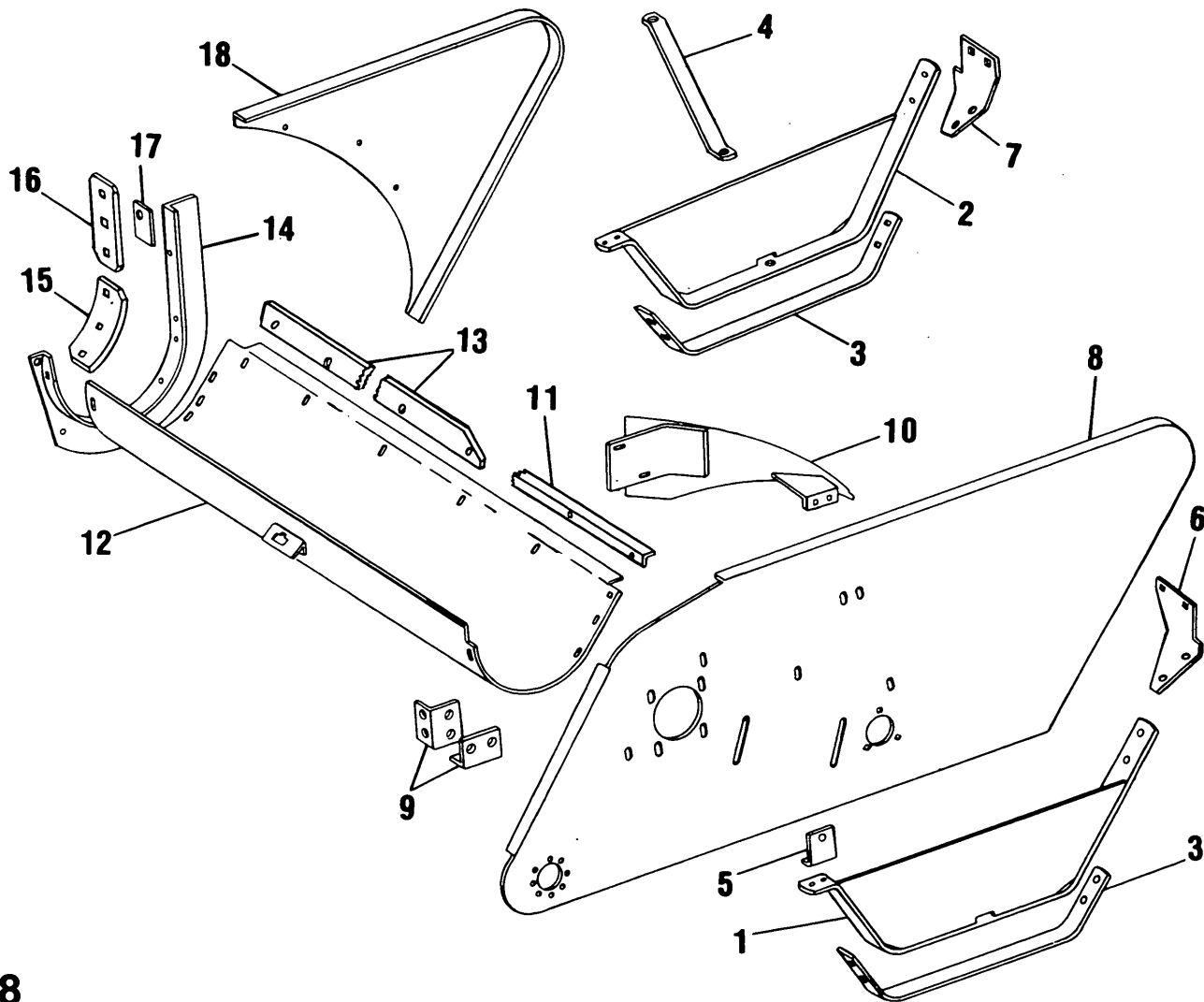
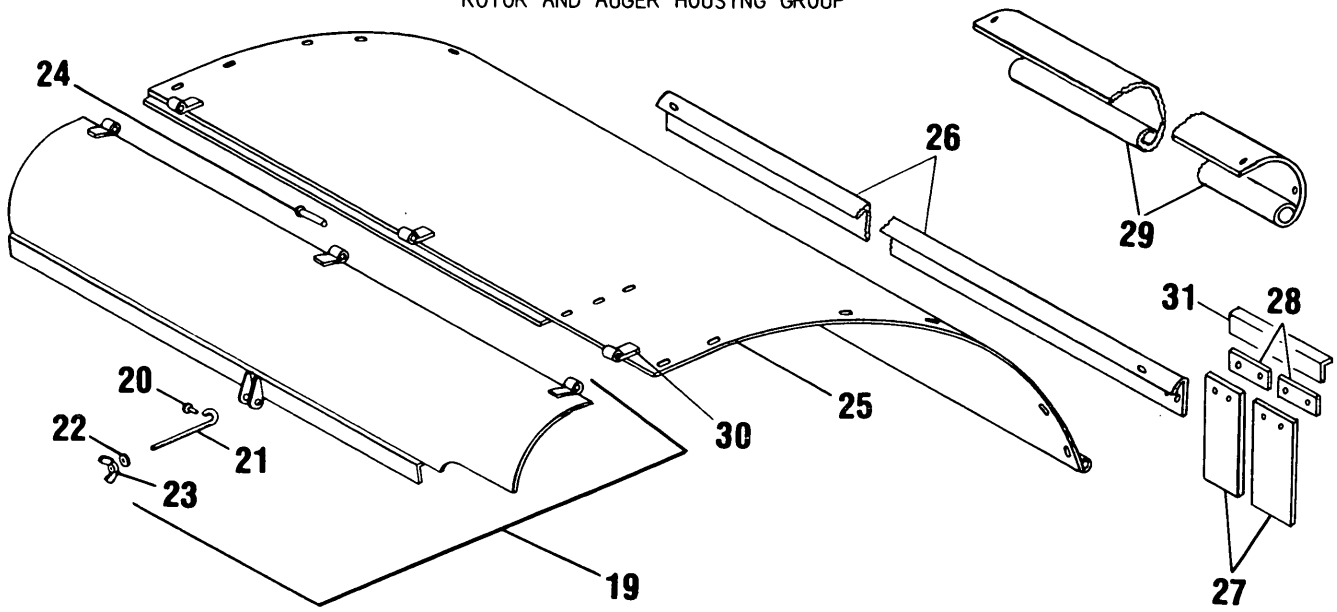


MODEL 34 AND 38 CROP CHOPPERS
AUGER GROUP

Ref. No.	Part No.	No. Used	Description
1	67545	1	Auger Weld Assembly - for Model 34
	67544	1	Auger Weld Assembly - for Model 38
		1	84361 Woodruff Key, #21, 1/4" x 1 1/4"
		1	87399 Cotter Pin, 3/16" x 1 3/4"
2	245743	1	Shield and Bearing Support
3	43048	3	Flangette
		6	88011 Cap Screw, Hex Head, Grade 5, 3/8" x 1 1/4"
		6	247780 Locknut, USR, 3/8"
4	38766	2	Ball Bearing
5	38767	2	Locking Collar
6	65717	2	Shroud
		2	87414 Lube Fitting, 1/4"-28
7	80664	6	Washer, 5/16"
8	65716	2	Guard
		6	88542 Cap Screw, Hex Head, Grade 5, 1/4" x 1/2"
		6	523282 Locknut, USR, 1/4"
9	46754	1	Side Plate
		4	280430 Carriage Bolt, Grade 5, 3/8" x 3/4"
		4	247780 Locknut, USR, 3/8"
10	27696	AR	Washer
11	46853	1	Shear Hub and Sleeve Assembly
		1	84361 Woodruff Key, #21, 1/4" x 1 1/4"
12	46522	2	Sleeve
13	87143	1	Cap Screw, Hex Head, Grade 2, 1/4" x 1 3/4" (Used as a Shear Bolt)
		1	80682 Lockwasher, 1/4"
		1	84942 Nut, 1/4"
14	49971	1	Shear Sprocket and Bushing Assembly (Includes Ref. No. 15)
		1	87414 Lube Fitting, 1/4"-28
15	46962	1	Bushing
16	37185	1	Retaining Ring
17	49968	1	Auger Drive Chain, Rear, RC #2040, 39 Total Pitches - for Model 34
	56364	1	Auger Drive Chain, Rear, RC #2040, 40 Total Pitches - for Model 38
		AR	25809 Roller Link
		AR	25813 Connector Link
		AR	25818 Offset Link

AR - As Required

MODEL 34 AND 38 CROP CHOPPERS
ROTOR AND AUGER HOUSING GROUP

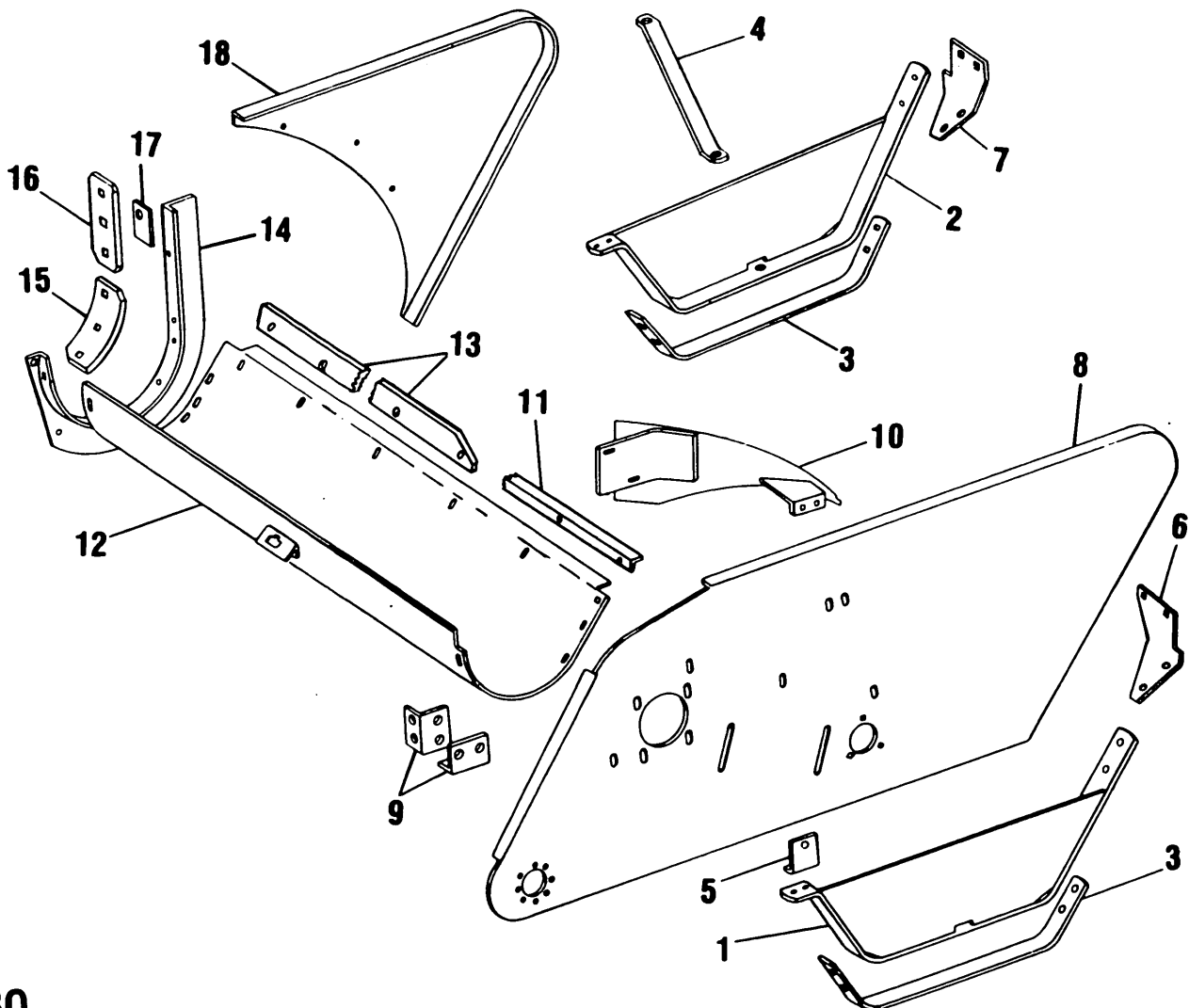
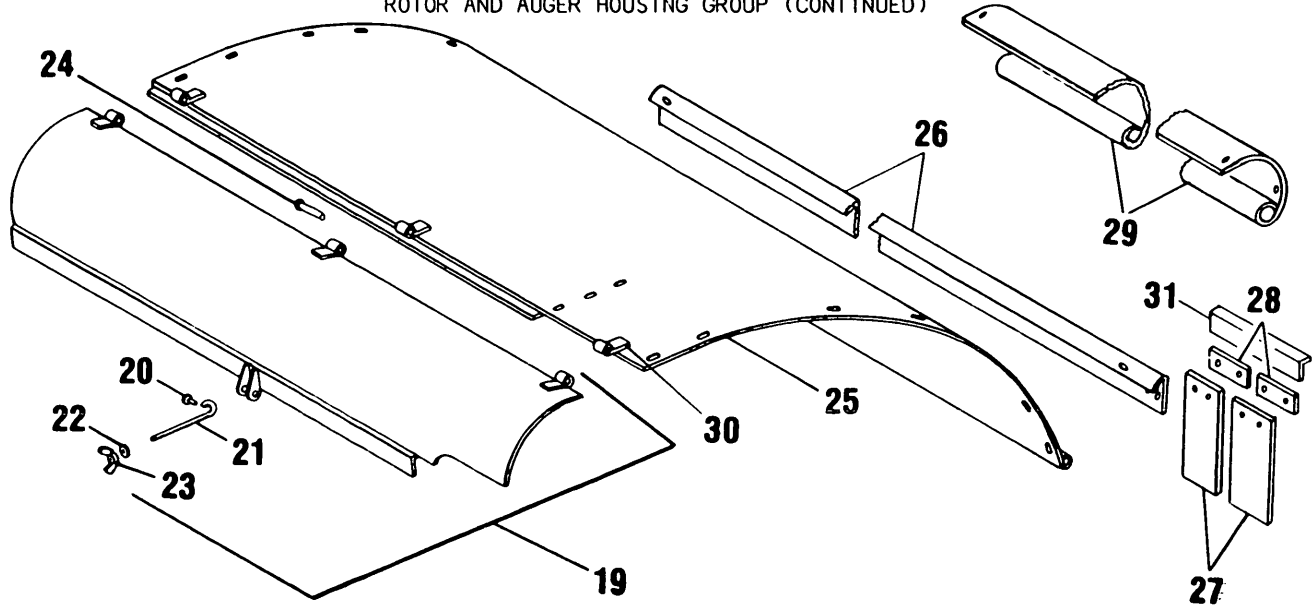


MODEL 34 AND 38 CROP CHOPPERS
 ROTOR AND AUGER HOUSING GROUP

Ref. No.	Part No.	No. Used		Description
		34	38	
1	46761	1	1	Shoe Support Weld Assembly, RH
				2 88011 Cap Screw, Hex Head, Grade 5, 3/8" x 1 1/4"
				2 88681 Carriage Bolt, Grade 5, 3/8" x 1 1/4"
				2 88632 Carriage Bolt, Grade 5, 3/8" x 1 1/2"
				6 247780 Locknut, USR, 3/8"
2	47142	1	1	Shoe Support Weld Assembly, LH
				2 88011 Cap Screw, Hex Head, Grade 5, 3/8" x 1 1/4"
				2 88681 Carriage Bolt, Grade 5, 3/8" x 1 1/4"
				2 88632 Carriage Bolt, Grade 5, 3/8" x 1 1/2"
				6 247780 Locknut, USR, 3/8"
3	46760	2	2	Shoe
				8 88632 Carriage Bolt, Grade 5, 3/8" x 1 1/2"
				8 87016 Washer, 3/8" SAE
				8 88902 Locknut, Grade C, 3/8"
4	46953	1	1	Shoe Support, LH
				1 88206 Cap Screw, Hex Head, Grade 5, 3/8" x 1"
				1 88011 Cap Screw, Hex Head, Grade 5, 3/8" x 1 1/4"
				2 247780 Locknut, USR, 3/8"
5	47084	1	1	Bracket
				1 88206 Cap Screw, Hex Head, Grade 5, 3/8" x 1"
				1 247780 Locknut, USR, 3/8"
6	47173	1	1	Shoe Support Brace, RH
				2 88682 Carriage Bolt, Grade 5, 3/8" x 1"
				2 247780 Locknut, USR, 3/8"
7	56331	1	1	Brace, LH (Model 38 Only)
				2 88682 Carriage Bolt, Grade 5, 3/8" x 1"
				2 247780 Locknut, USR, 3/8"
8	67553	1	1	Side Sheet, RH
9	46674	2	2	Angle
				2 280503 Bolt, Round Head, Short Square Neck, Grade 5, 3/8" x 1"
				2 88206 Cap Screw, Hex Head, Grade 5, 3/8" x 1"
				4 87016 Washer, 3/8" SAE
				4 247780 Locknut, USR, 3/8"
10	46708	1	1	Deflector Weld Assembly
				4 88682 Carriage Bolt, Grade 5, 3/8" x 1"
				4 247780 Locknut, USR, 3/8"
11	46815 50690	1	1	Auger Housing Support
				7 88206 Cap Screw, Hex Head, Grade 5, 3/8" x 1"
				7 247780 Locknut, USR, 3/8"
12	50780 50677	1	1	Auger Bottom Weld Assembly
				Auger Bottom Weld Assembly
				5 88682 Carriage Bolt, Grade 5, 3/8" x 1"
				5 88681 Carriage Bolt, Grade 5, 3/8" x 1 1/4"
				5 88206 Cap Screw, Hex Head, Grade 5, 3/8" x 1"
				1 87259 Machine Screw, Truss Head, 3/8" x 1"
13	249154	1	1	Baffle
				16 247780 Locknut, USR, 3/8"
14	46756	1	1	Auger Bottom Support
				5 88682 Carriage Bolt, Grade 5, 3/8" x 1"
				2 88206 Cap Screw, Hex Head, Grade 5, 3/8" x 1"
				7 247780 Locknut, USR, 3/8"
15	46819	1	1	Shear Plate, Curved
				3 88681 Carriage Bolt, Grade 5, 3/8" x 1 1/4"
				3 247780 Locknut, USR, 3/8"
16	46818	1	1	Shear Plate, Straight
				3 88632 Carriage Bolt, Grade 5, 3/8" x 1 1/2"
				3 247780 Locknut, USR, 3/8"
				3 247780 Locknut, USR, 3/8"

CONTINUED

MODEL 34 AND 38 CROP CHOPPERS
ROTOR AND AUGER HOUSING GROUP (CONTINUED)



MODEL 34 AND 38 CROP CHOPPERS
 ROTOR AND AUGER HOUSING GROUP (CONTINUED)

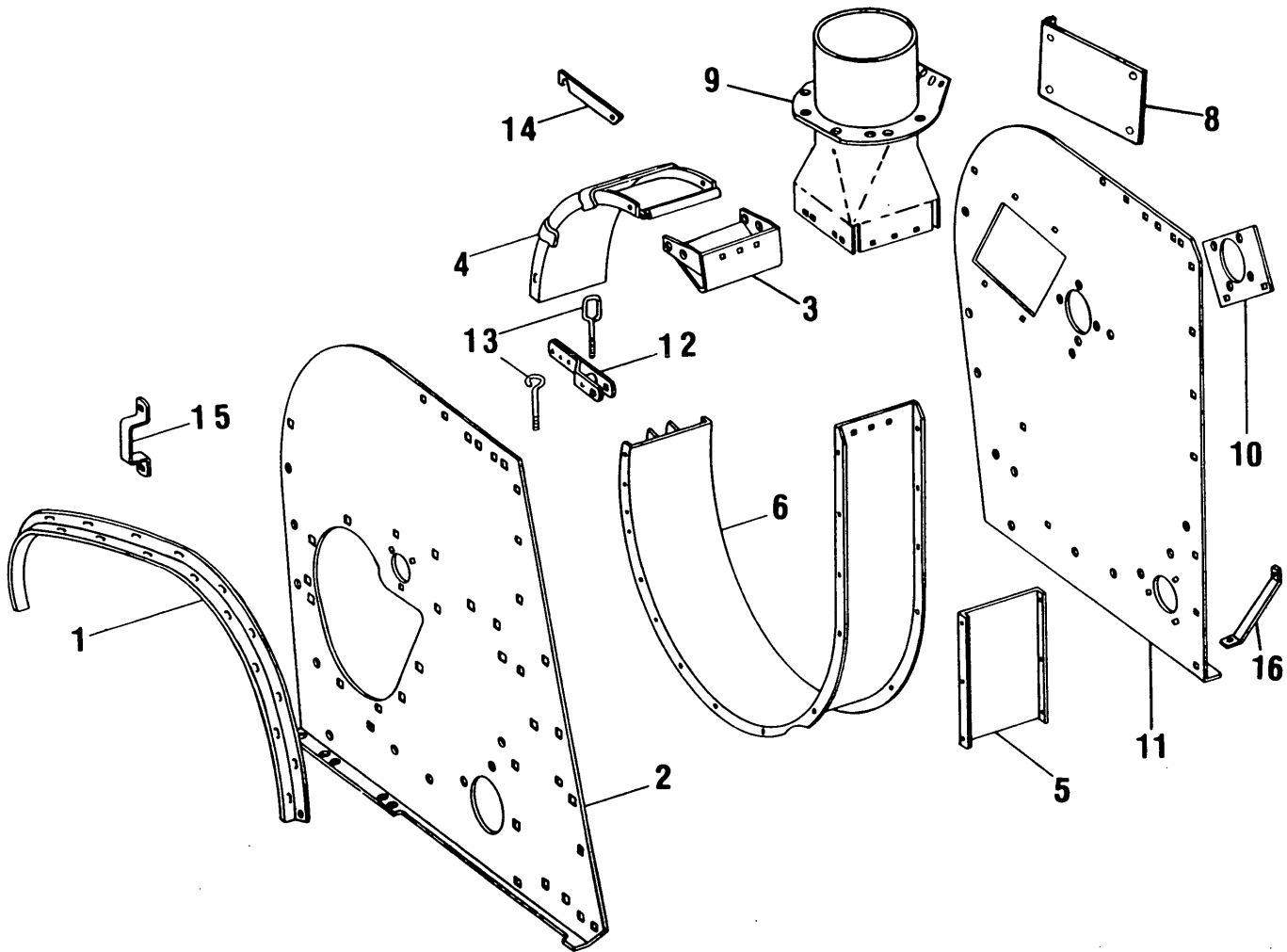
Ref. No.	Part No.	No. Used		Description
		34	38	
17	47568	1	1	Spacer
18	47027	1	1	Divider Weld Assembly 5 88639 Bolt, Round Head, Short Square Neck, Grade 5, 3/8" x 3/4"
19	285301 285296	1	1	5 247780 Locknut, USR, 3/8" Door Assembly (Includes Ref. Nos. 20 thru 23) Door Assembly (Includes Ref. Nos. 20 thru 23) --- Replaces 285302
20	88011	1	1	Cap Screw, Hex Head, Grade 5, 3/8" x 1 1/4" 1 88902 Locknut, Grade C, 3/8"
21	36835	1	1	Eyebolt
22	87016	1	1	Washer, 3/8"
23	80840	1	1	Wing Nut, 3/8"
24	47221	3	3	Drilled Rivet 3 80756 Cotter Pin, 1/8" x 3/4"
25	47054 782252	1	1	Rotor Hood Weld Assembly Rotor Hood Weld Assembly --- Replaces 50680 20 88682 Carriage Bolt, Grade 5, 3/8" x 1" 20 247780 Locknut, USR, 3/8"
26	48213 (g) 50672 (h) 782336	1	1	Channel Weld Assembly, Safety Shield Support Channel Weld Assembly, Safety Shield Support Channel Weld Assembly, Safety Shield Support AR 88703 Cap Screw, Hex Head, 3/8" x 5/8" AR 280643 Cap Screw, Hex Head, 3/8" x 7/8" AR 80680 Lockwasher, 3/8"
27	782340	18	22	Flap, Safety Shield (g)AR 87908 Tubular Rivet, Flat Head, 3/16" x 3/4" (h)AR 88011 Cap Screw, Hex Head, Grade 5, 3/8" x 1 1/4" (h)AR 88902 Locknut, Grade C, 3/8"
28	(g) 48210	18	22	Back-up Plate
29	208296		1	Option Push Bar Kit (Order as an attachment) 4 87101 Machine Screw, Truss Head, 3/8" x 3/4" 4 80680 Lockwasher, 3/8" 4 84944 Nut, 3/8"
30	782251	3	3	Hinge 3 280430 Carriage Bolt, Grade 5, 3/8" x 3/4" 3 247780 Locknut, USR, 3/8"
31	782338	1	1	Hinge

AR - As Required

(g) Used on and below Serial No. 456124

(h) Used on and above Serial No. 456125

MODEL 34 AND 38 CROP CHOPPERS
CUTTERHEAD HOUSING GROUP



Ref. No.	Part No.	No. Used	Description
1	46921	1	Cover Support, LH
			11 88682 Carriage Bolt, Grade 5, 3/8" x 1"
			11 247780 Locknut, USR, 3/8"
2	46741	1	Cutterhead Housing, RH
			4 87670 Cap Screw, Hex Head, Grade 5, 1/2" x 1 1/4"
			4 80679 Lockwasher, 1/2"
			4 280431 Nut, Grade 5, 1/2"
3	65694	1	Short Band Weld Assembly
			1 88678 Carriage Bolt, Grade 5, 3/8" x 1 3/4"
			2 88639 Bolt, Round Head, Short Square Neck, Grade 5, 3/8" x 3/4"
			3 80680 Lockwasher, 3/8"
			3 84944 Nut, 3/8"
4	(g) 47059	1	Door Weld Assembly
	(h) 782344	1	Door Weld Assembly
			1 87790 Cap Screw, Hex Head, 3/8" x 8"
			2 87016 Washer, 3/8"
			1 88902 Locknut, Grade C, 3/8"

(g) Used on and below Serial No. 456124
(h) Used on and above Serial No. 456125

CONTINUED

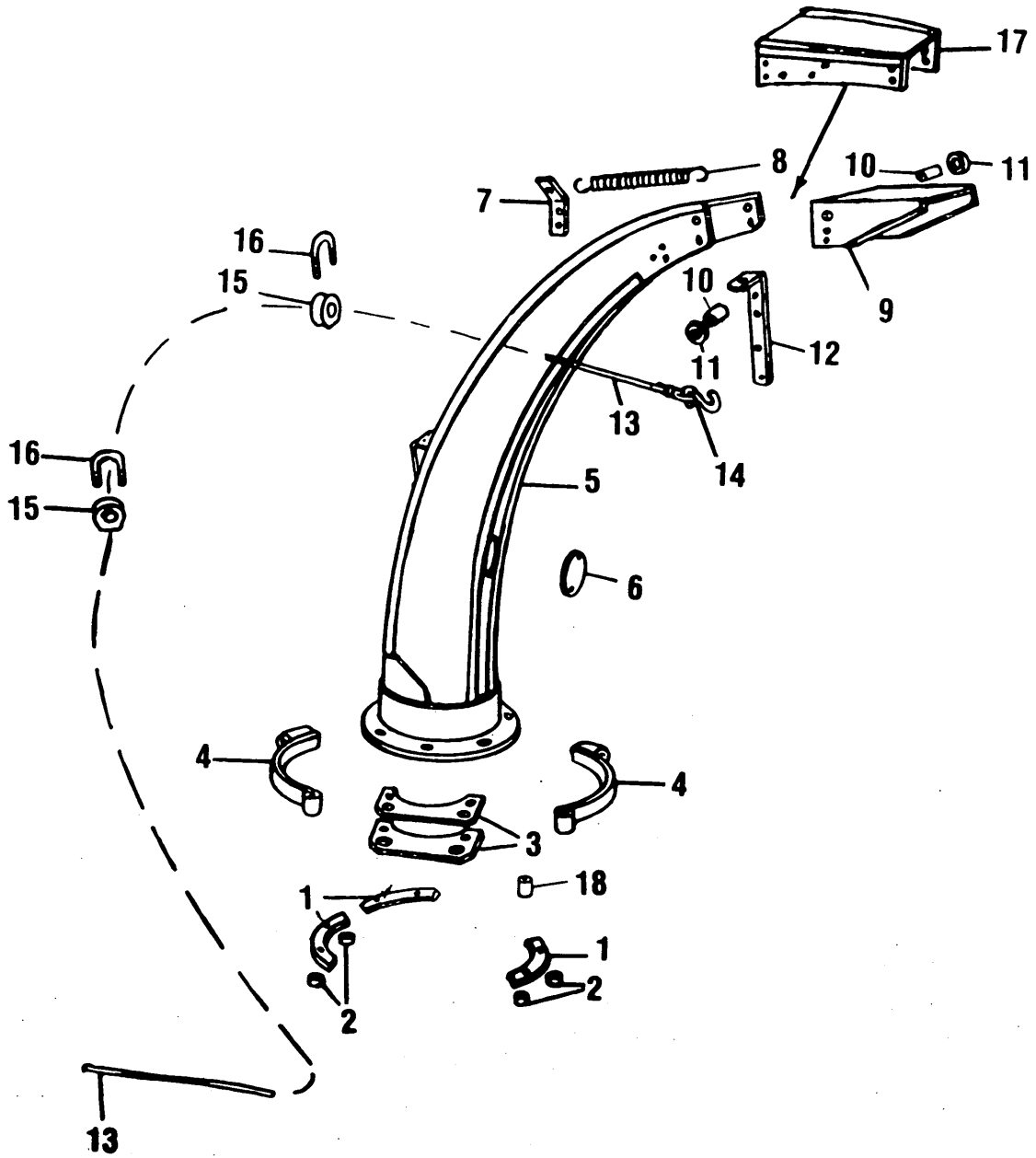
MODEL 34 AND 38 CROP CHOPPERS
CUTTERHEAD HOUSING GROUP (CONTINUED)

Ref. No.	Part No.	No. Used	Description
5	47040	1	Channel
		6	88639 Bolt, Round Head, Short Square Neck, Grade 5, 3/8" x 3/4"
		6	247780 Locknut, USR, 3/4"
6	(g) 58166	1	Cutterhead Band Weld Assembly
	(h) 782343	1	Cutterhead Band Weld Assembly
		11	88434 Cap Screw, Hex Head, Grade 5, 3/8" x 3/4"
		3	88206 Cap Screw, Hex Head, Grade 5, 3/8" x 1"
		1	88428 Cap Screw, Hex Head, Grade 5, 3/8" x 1 3/4"
		5	88639 Bolt, Round Head, Short Square Neck, Grade 5, 3/8" x 3/4"
		5	87909 Cap Screw, Hex Head, Grade 5, 1/2" x 1"
		3	87868 Carriage Bolt, Grade 5, 1/2" x 1 1/4"
		8	80679 Lockwasher, 1/2"
		22	247780 Locknut, USR, 3/8"
		8	280431 Nut, Grade 5, 1/2"
8	782332	1	Cover --- Replaces 47063 and 47064
9	288215	1	Transition Weld Assembly
		14	87868 Carriage Bolt, Grade 5, 1/2" x 1 1/4"
		14	80679 Lockwasher, 1/2"
		14	280431 Nut, Grade 5, 1/2"
10	46664	1	Bearing Support Plate
		2	280428 Carriage Bolt, Grade 5, 5/16" x 1"
		2	145458 Locknut, USR, 5/16"
11	710640	1	Cutterhead Housing Weld Assembly, LH --- Replaces 58072
		5	87909 Cap Screw, Hex Head, Grade 5, 1/2" x 1"
		1	280499 Bolt, Round Head, Short Square Neck, Grade 5, 1/2" x 1"
		6	80679 Lockwasher, 1/2"
		6	280431 Nut, Grade 5, 1/2"
12	(g) 38283	1	Handle Weld Assembly
		2	88682 Carriage Bolt, Grade 5, 3/8" x 1"
		2	88902 Locknut, Grade C, 3/8"
13	(g) 38231	1	Eyebolt
	(h) 36835	1	Eyebolt
		(g)1	84970 Jam Nut, 1/2"
		(h)1	88011 Cap Screw, Hex Head, Grade 5, 3/8" x 1 1/4"
		(h)1	87016 Washer, 3/8", SAE
		(h)2	88902 Locknut, Grade C, 3/8"
14	47065	1	Door Latch
		1	88632 Carriage Bolt, Grade 5, 3/8" x 1 1/2"
		2	87016 Washer, 3/8", SAE
		2	88902 Locknut, Grade C, 3/8"
15	(g) 47090	1	Bracket
		2	88682 Carriage Bolt, Grade 5, 3/8" x 1"
		2	80680 Lockwasher, 3/8"
		2	84944 Nut, 3/8"
16	710638	1	Brace
		1	87670 Cap Screw, Hex Head, Grade 5, 1/2" x 1 1/4"
		1	87868 Carriage Bolt, Grade 5, 1/2" x 1 1/4"
		1	80700 Washer, 1/2"
		2	80679 Lockwasher, 1/2"
		2	280431 Nut, Grade 5, 1/2"

(g) Used on and below Serial No. 456124

(h) Used on and above Serial No. 456125

MODEL 34 AND 38 CROP CHOPPERS
SPOUT GROUP



MODEL 34 AND 38 CROP CHOPPERS
SPOUT GROUP

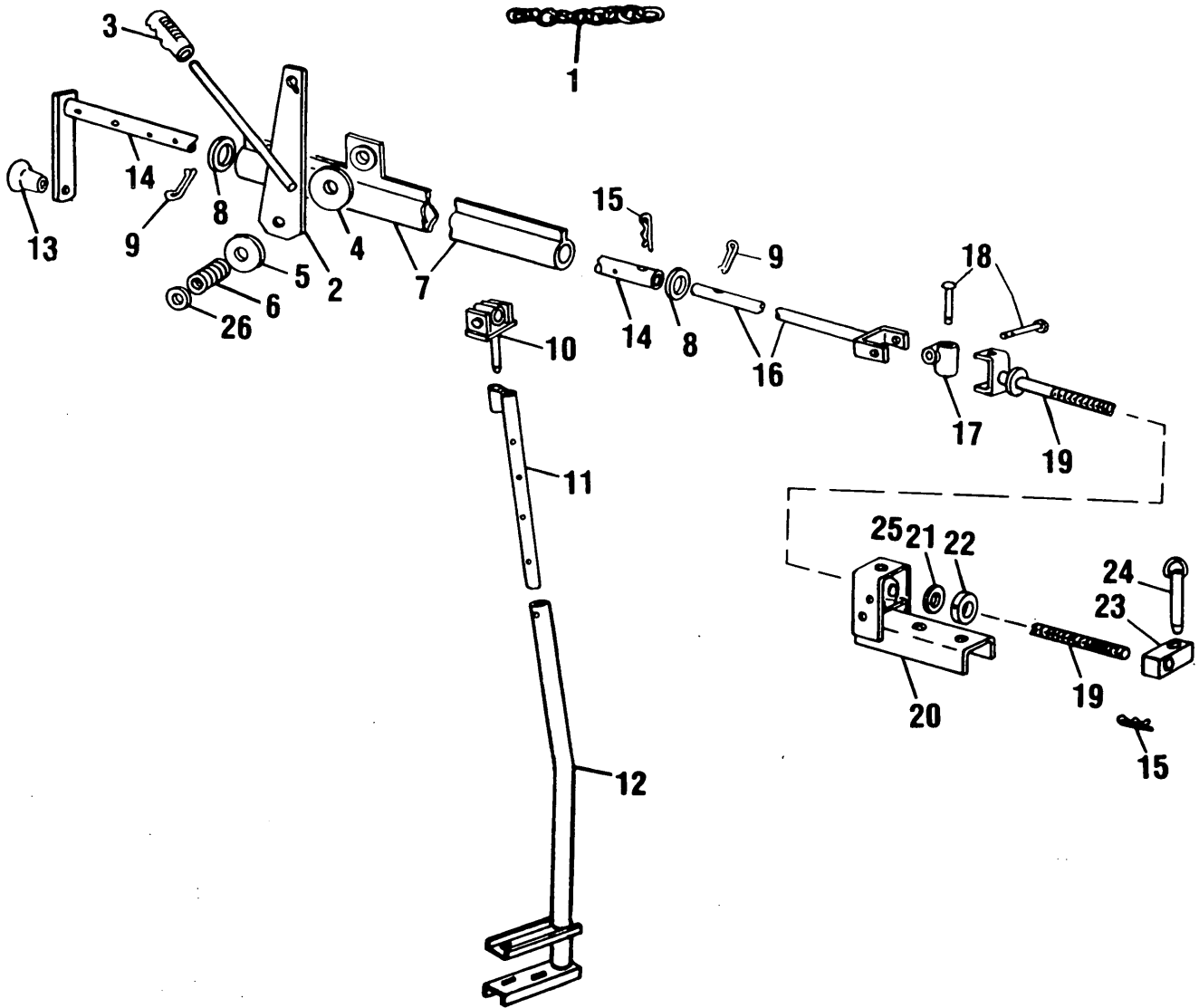
Ref. No.	Part No.	No. Used	Description
1	688048	3	Retainer --- Replaces 181316 6 88044 Cap Screw, Hex Head, Grade 8, 3/8" x 1 1/2" 6 80680 Lockwasher, 3/8" 6 88902 Locknut, Grade C, 3/8"
2	646056	6	Spacer --- Replaces 105907
3	(m) 285839	2	Plate
	(n) 854387	2	Plate 2 87972 Cap Screw, Hex Head, Grade 5, 1/2" x 2 1/2" 2 80679 Lockwasher, 1/2" 2 280431 Nut, Grade 5, 1/2"
4	285840	2	Strap Weld Assembly 1 88576 Cap Screw, Hex Head, Grade 5, 1/2" x 5 1/2" 2 87364 Washer, 1/2" 1 80679 Lockwasher, 1/2" 1 280431 Nut, Grade 5, 1/2"
5	767894	1	Spout Weld Assembly, Standard, 51" High
	287391	1	Spout Weld Assembly, Short, 44" High - OPTIONAL 2 87414 Lube Fitting, 1/4"-28 1 88131 Machine Screw, Truss Head, 3/8" x 1 3/4" 1 80680 Lockwasher, 3/8" 1 84944 Nut, 3/8"
6	164342	1	Cover 2 88833 Carriage Bolt, Grade 5, 1/4" x 1" 1 80701 Washer, 1/4" 2 80682 Lockwasher, 1/4" 2 84878 Wing Nut, 1/4"
7	136682	1	Bracket 2 87702 Machine Screw, Flat Head, 3/8" x 1" 2 80702 Washer, 3/8" 2 80680 Lockwasher, 3/8" 2 84944 Nut, 3/8"
8	29579	1	Spring
9	764837	1	Deflector --- Replaces 183934, 603021 and 631738 2 280720 Machine Screw, Flat Head, 3/8" x 1 3/4" 2 80680 Lockwasher, 3/8" 2 84944 Nut, 3/8"
10	136696	2	Spacer
11	34187	3	Washer
12	764833	1	Bracket 2 87872 Cap Screw, Hex Head, Grade 5, 5/16" x 3/4" 2 80681 Lockwasher, 5/16" 2 84943 Nut, 5/16"
13	46972	1	Rope Assembly
14	34455	1	Anchor Hook
15	28110	3	Rope Guide
16	28114	3	"U" Bolt 6 80684 Lockwasher, #10 6 87304 Nut, #10-24
17	602530	1	Spout Extension, 27" Long (686mm) 6 87101 Machine Screw, Truss Head, 3/8" x 3/4" 4 87259 Machine Screw, Truss Head, 3/8" x 1" 10 80702 Washer, 3/8" 10 80680 Lockwasher, 3/8" 10 84944 Nut, 3/8"
18	(n) 861180	1	Spacer 1 88780 Cap Screw, Hex Head, Grade 5, 5/16" x 2 1/4" 1 80681 Lockwasher, 5/16" 1 84943 Nut, 5/16"

AR - As Required

(m) Used on and below Serial No. 707735

(n) Used on and above Serial No. 707736

MODEL 34 AND 38 CROP CHOPPERS
MANUAL SPOUT CONTROL GROUP



MODEL 34 AND 38 CROP CHOPPERS
MANUAL SPOUT CONTROL GROUP

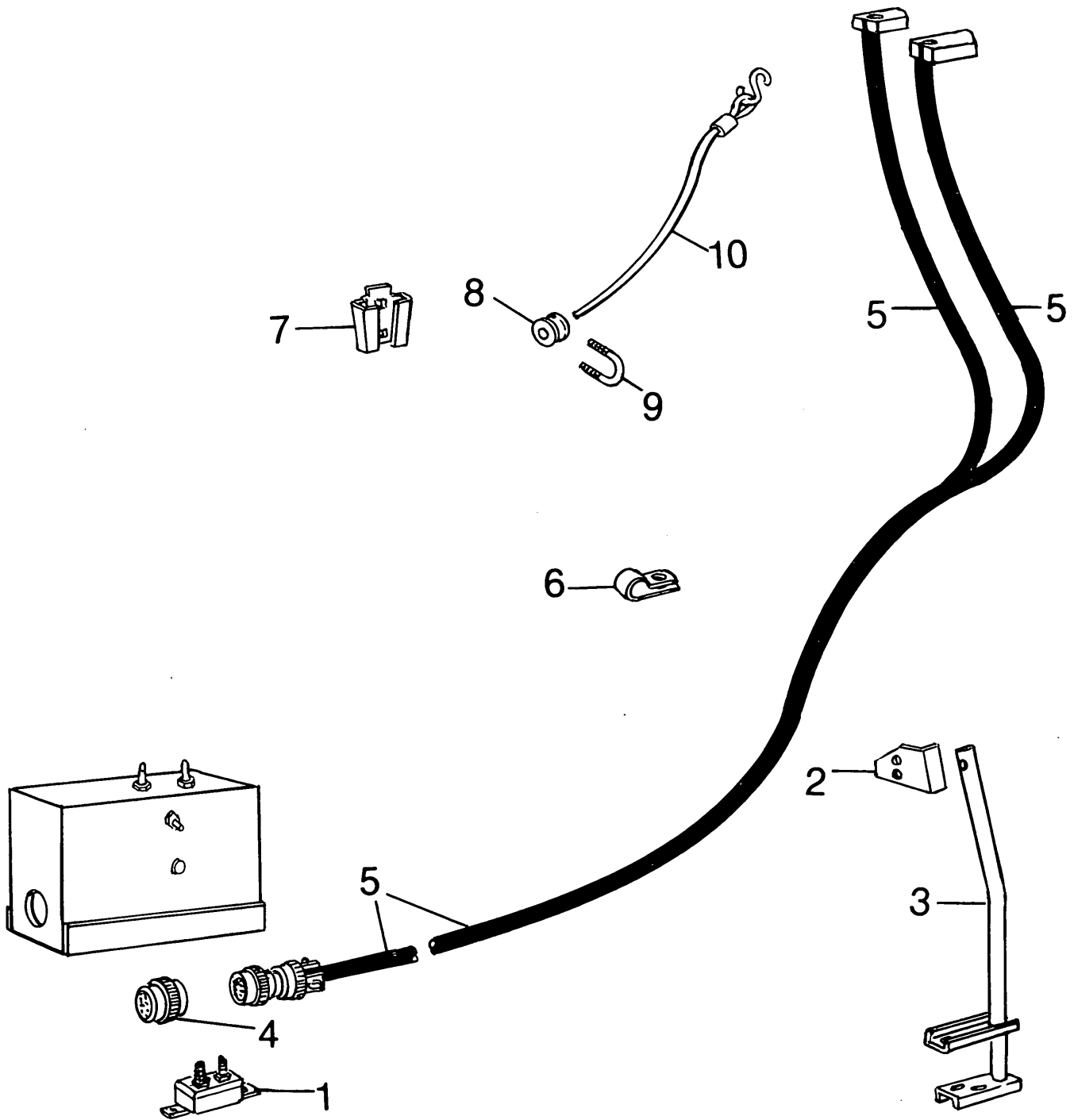
Ref. No.	Part No.	No. Used	Description
1	48454	1	Chain Assembly, Includes 2 of 41613 "S" Hook
2	122398	1	Lever Weld Assembly 1 87936 Cap Screw, Hex Head, Grade 5, 3/8" x 2 1/2" 1 84944 Nut, 3/8"
3	126697	1	Grip
4	29526	1	Friction Disc
5	35781	1	Washer
6	32307	1	Spring
7	122493	1	Tube and Bracket Weld Assembly
8	672	5	Washer
9	80753	2	Cotter Pin, 1/4" x 1 1/2"
10	226013	1	Pivot Sleeve Weld Assembly 1 80756 Cotter Pin, 1/8" x 3/4"
11	288211	1	Control Column Weld Assembly 1 88546 Cap Screw, Hex Head, Grade 5, 3/8" x 2 1/4" 1 80680 Lockwasher, 3/8" 1 84944 Nut, 3/8"
12	288207	1	Bracket and Support Weld Assembly 2 88576 Cap Screw, Hex Head, Grade 5, 1/2" x 5 1/2" 4 80700 Washer, 1/2" 2 80679 Lockwasher, 1/2" 2 280431 Nut, Grade 5, 1/2"
13	33781	1	Knob 1 87936 Cap Screw, Hex Head, Grade 5, 3/8" x 2 1/2" 1 88902 Locknut, Grade C, 3/8"
14	288213	1	Tube and Handle Weld Assembly
15	37851	2	Hairpin Cotter
16	122499	1	Yoke and Tube Weld Assembly
17	35717	1	Universal Block 1 87414 Lube Fitting, 1/4"-28
18	15081	2	Drilled Rivet 2 80756 Cotter Pin, 1/8" x 3/4"
19	136708	1	Yoke and Rod Weld Assembly 1 87538 Spring Pin, 1/4" x 1"
20	9617182	1	Bracket Weld Assembly --- Replaces 577675 and 854382 1 87415 Lube Fitting, 1/4"-28, 90° 2 87670 Cap Screw, Hex Head, Grade 5, 1/2" x 1 1/4" 2 80679 Lockwasher, 1/2" 2 280431 Nut, Grade 5, 1/2"
21	67978	AR	Washer, .020" (.508mm) Thick
22	36993	1	Collar 1 87343 Groove Pin, Type A, 1/4" x 1 3/4"
23	(m) 136684	1	Nut
	(n) 854381	1	Pivot Nut 2 87414 Lube Fitting, 1/4"-28 1 37851 Hairpin Cotter
24	(n) 138243	1	Pin Weld Assembly
25	26301	AR	Washer, .125" (3.175mm) Thick
26	34187	1	Washer

AR - As Required

(m) Used on and below Serial No. 707735

(n) Used on and above Serial No. 707736

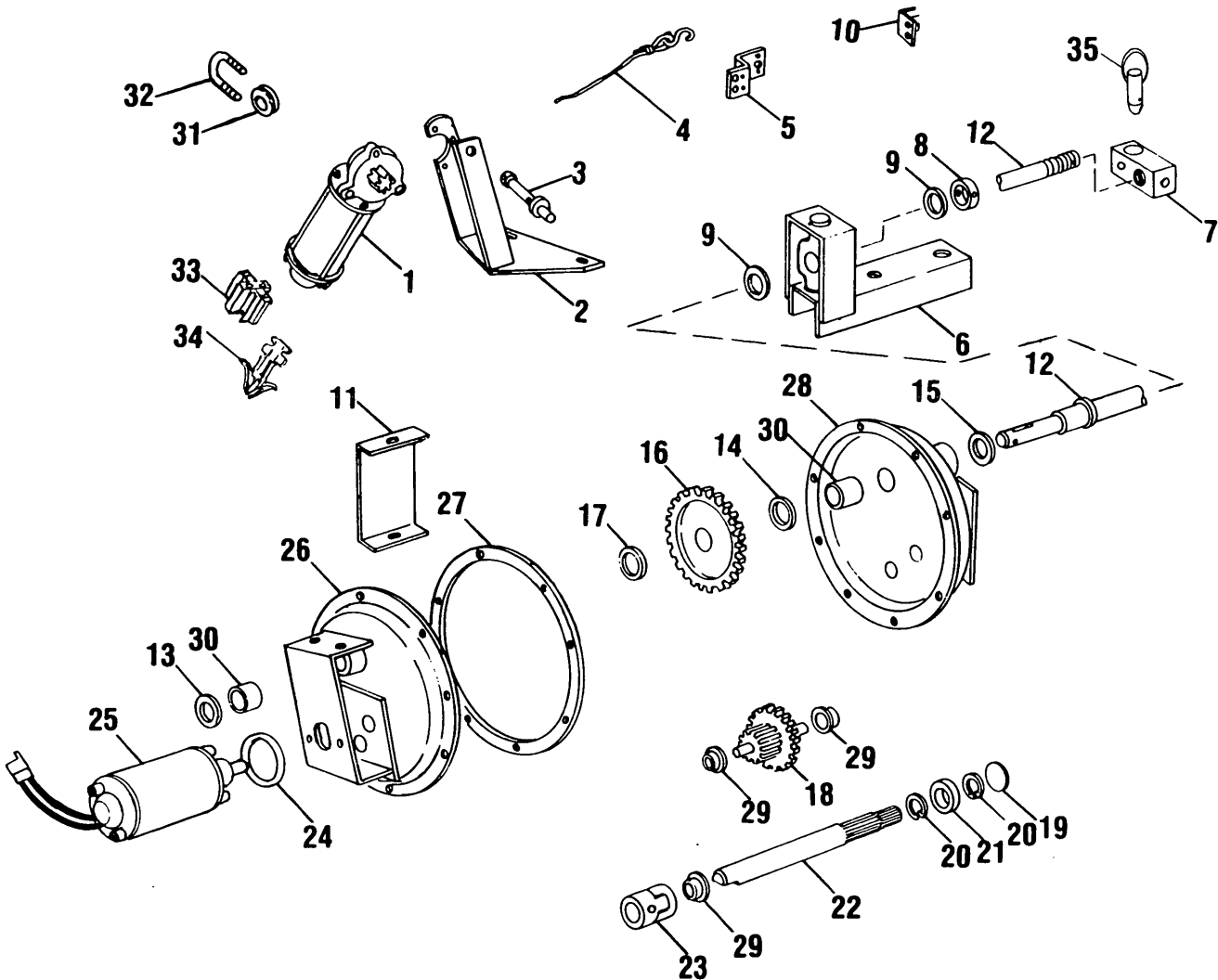
MODEL 38 CROP CHOPPER
ELECTRIC CONTROLS



MODEL 38 CROP CHOPPER
ELECTRIC CONTRÔLS

Ref. No.	Part No.	No. Used	Description
1	767893	1	Circuit Breaker, 30 AMP
		2	46432 Terminal, #10
		2	59273 Terminal, Ring, 3/8"
		2	167169 Connector, Ring, 1/2"
2	786257	1	Bracket
		2	87936 Cap Screw, Hex Head, Grade 5, 3/8" x 2 1/4"
		2	88902 Locknut, Grade C, 3/8"
3	288207	1	Bracket
		2	88576 Cap Screw, Hex Head, Grade 5, 1/2" x 5 1/2"
		4	80700 Washer, 1/2"
		2	80679 Lockwasher, 1/2"
		2	280431 Nut, Grade 5, 1/2"
4	767455	1	Dust Cover Receptacle
		1	636665 Lockwasher
		1	636666 Nut
5	643201	1	Wire Harness, Machine
6	708182	4	Clamp
		2	256873 Lockscrew, USR, 5/16" x 1/2"
		2	145458 Locknut, USR, 5/16"
7	847590	1	Socket
		2	88992 Bolt, Round Head, Short Square Neck, Grade 5, 5/16" x 1"
		2	80681 Lockwasher, 5/16"
		2	84943 Nut, 5/16"
8	28110	2	Guide
9	28114	2	U-Bolt
		4	80684 Lockwasher, #10
		4	87304 Nut, #10
10	238657	1	Rope Assembly

MODEL 38 CROP CHOPPER
ELECTRIC CONTROLS
SPOUT AND DEFLECTOR CONTROLS GROUP



Ref. No.	Part No.	No. Used	Description
1	576242	1	Motor Assembly (Includes Ref. No. 33)
		3	88573 Cap Screw, Hex Head, Grade 5, 1/4" x 3/4"
		3	80702 Washer, 1/4"
		3	88538 Lockwasher, 1/4", Internal-External Tooth
2	254643	1	Bracket Weld Assembly
3	222785	1	Spool Weld Assembly
		2	88967 Set Screw, Hex Socket, Cone Point, 1/4" x 1/2"
		2	87305 Jam Nut, 1/4"
4	238657	1	Deflector Rope Assembly (Includes the following)
		1	27084 Pig Ring
		1	115680 Anchor Hook
5	136678	1	Bracket
		2	88206 Cap Screw, Hex Head, Grade 5, 3/8" x 1"
		2	80702 Washer, 3/8"
		2	80680 Lockwasher, 3/8"
		2	84944 Nut, 3/8"

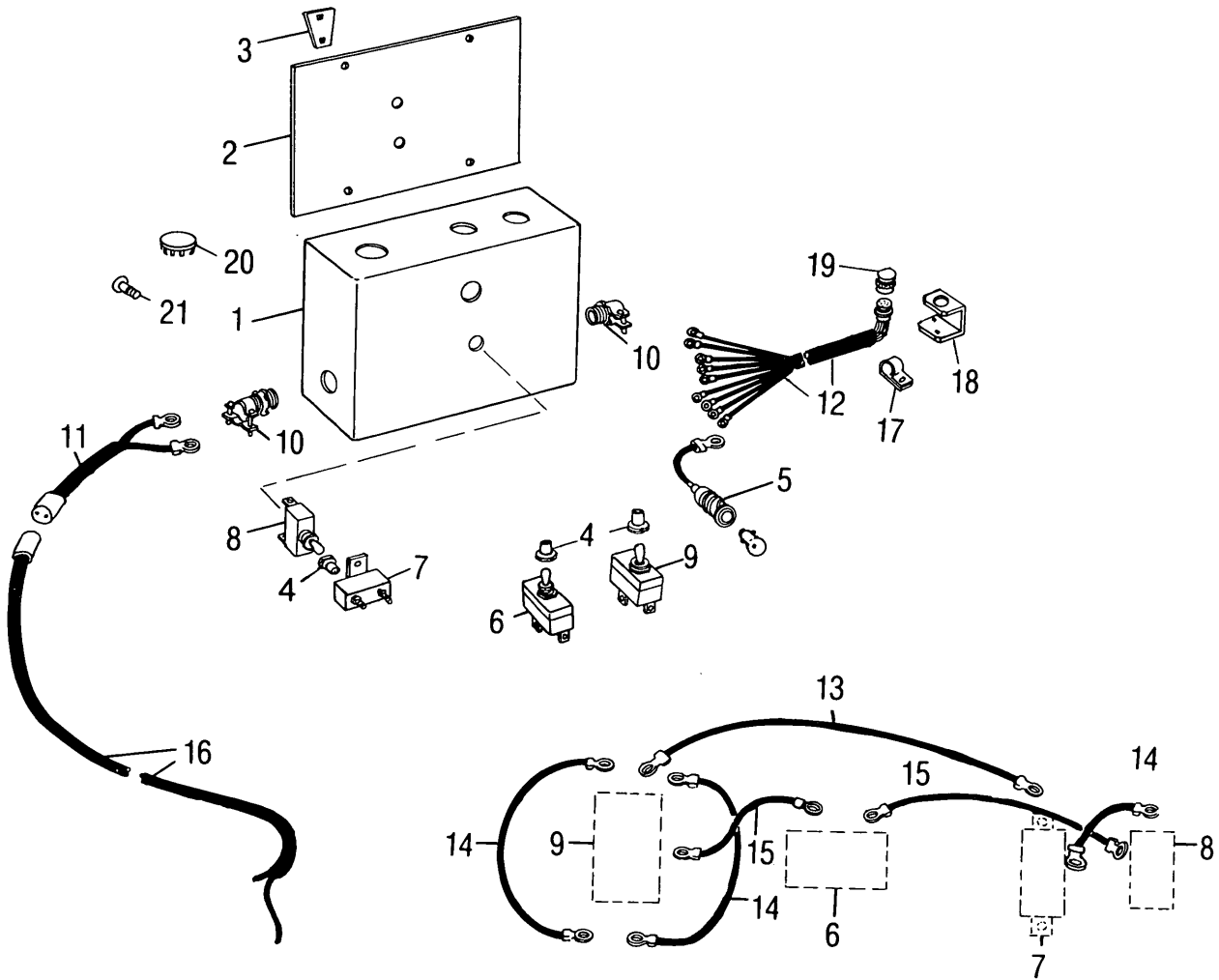
CONTINUED

MODEL 38 CROP CHOPPER
ELECTRIC CONTROLS
SPOUT AND DEFLECTOR CONTROLS GROUP (CONTINUED)

Ref. No.	Part No.	No. Used	Description
6	9617182	1	Bracket Weld Assembly --- Replaces 577675 and 854382 1 87415 Lube Fitting, 1/4"-28, 90° 2 87670 Cap Screw, Hex Head, Grade 5, 1/2" x 1 1/4" 2 80679 Lockwasher, 1/2" 2 280431 Nut, Grade 5, 1/2"
7	136684	1	Nut, Special 2 87414 Lube Fitting, 1/4"-28, Straight
8	36993	1	Drag Link Collar 1 84064 Groove Pin, Type "A", 1/4" x 1 3/4"
9	33261	2	Thrust Washer
10	237219	1	Angle 2 88859 Cap Screw, Hex Head, Grade 5, 5/16" x 5/8" 2 80681 Lockwasher, 5/16"
11	237548	1	Shield 2 87667 Screw, Hex Head, Self-Tapping, 1/4" x 1/2" 2 80701 Washer, 1/4" 2 80682 Lockwasher, 1/4"
12	854385	1	Screw Weld Assembly, Spout Gearbox --- Replaces 237217 1 87538 Spring Pin, 1/4" x 1" 1 87397 Cotter Pin, 3/16" x 1"
13	87381	AR	Washer, 3/4", SAE
14	45960	1	Washer, Special
15	26260	AR	Washer, Special
16	224894	1	Gear, 72 Tooth 1 80810 Woodruff Key, #9, 3/16" x 3/4"
17	29534	1	Washer, Special
18	238943	1	Gear Assembly
19	229101	1	Expansion Plug
20	49894	2	Retaining Ring
21	228662	1	Ball Bearing
22	228519	1	Gear Shaft, 10 Tooth
23	228661	1	Flexible Coupling 2 87836 Set Screw, Hex Socket, Cup Point, 1/4" x 5/8" 2 87305 Jam Nut, 1/4"
24	241104	1	"O" Ring
25	224895	1	Motor Assembly
26	577767	1	Shield Weld Assembly (Includes (2) Ref. No. 29 and (1) Ref. No. 30)
27	225183	AR	Shim
28	225180	1	Shield Weld Assembly (Includes (1) each Ref. Nos. 29 and 30) 8 280641 Cap Screw, Hex Head, Grade 5, 1/4" x 5/8" 8 80682 Lockwasher, 1/4" 8 84942 Nut, 1/4"
29	133246	3	Bushing
30	66812	2	Bushing
31	28110	1	Rope Guide
32	28114	1	U-Bolt 2 80684 Lockwasher, #10 2 87304 Nut, #10-24
33	289783	1	Electrical Connector
34	575943	2	Electrical Connector
35	138243	1	Pin Weld Assembly 1 37851 Hairpin Cotter

AR - As Required

MODEL 38 CROP CHOPPER
ELECTRIC CONTROLS
CONTROL BOX GROUP



MODEL 38 CROP CHOPPER
ELECTRIC CONTROLS
CONTROL BOX GROUP

Ref. No.	Part No.	No. Used	Description
1	784539	1	Control Box Assembly
	285688		Control Box Weld Assembly
			1 60485 Machine Screw, Truss Head, #10 x 3/4"
			1 80707 Washer, 3/16"
			1 80684 Lockwasher, #10
2	222781	1	Back Sheet
			4 87667 Self-Tapping Screw, Hex Head, 1/4" x 1/2"
3	222782	1	Bracket
			2 280428 Carriage Bolt, Grade 5, 5/16" x 1"
			4 80664 Washer, 5/16"
			2 87362 Washer, 5/16" SAE
			2 280736 Locknut, Grade C, 5/16"
4	602997	3	Seal
5	237294	1	Indicator Lamp
			AR 271431 Bulb
6	578471	1	Switch, Spout
7	768120	1	Circuit Breaker, 20 AMP
			2 84821 Machine Screw, Truss Head, #10-24 x 1/2"
			4 80684 Lockwasher, #10
			4 87304 Nut, #10
8	613988	1	Toggle Switch
9	602996	1	Toggle Switch
10	N.S. 102046	2	Connector, Straight, 3/4" (Purchase Locally)
11	796720	1	Wire Harness (From Tractor) --- Replaces 572854
12	643202	1	Wire Harness (Control Box to Harvester)
			1 636665 Lockwasher
			1 636666 Nut
13	* 164448	1	Wire Assembly, 10 GA., 7" (178mm) Long, White
14	* 237299	3	Wire Assembly, 10 GA., 5 1/2" (140mm) Long, Black
15	* 174620	2	Wire Assembly, 12 GA., 6 1/2" (165mm) Long, Black
16	796719	1	Wire Harness (Box to Tractor Harness) --- Replaces 572853
17	237980	1	Clamp
			2 280638 Bolt, Round Head, Short Square Neck, Grade 5, 1/4" x 3/4"
			1 80701 Washer, 1/4"
			1 280279 Lockwasher, 1/4", External Tooth
			1 80682 Lockwasher, 1/4"
			1 84942 Nut, 1/4"
18	787868	1	Bracket
19	767456	1	Dust Cover, Receptacle
20	87651	1	Plug Button
21	60485	1	Machine Screw, Truss Head, #10 x 3/4"

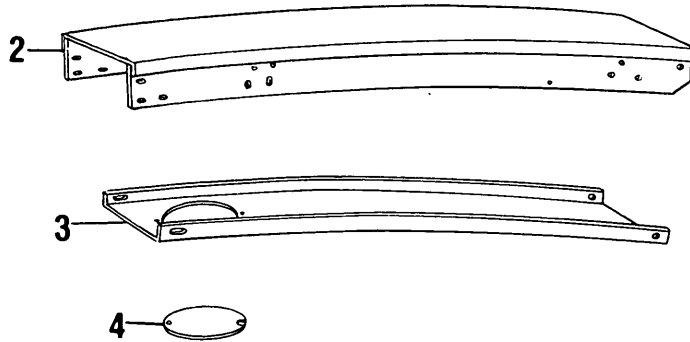
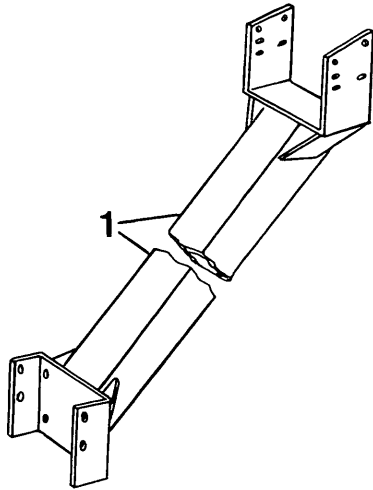
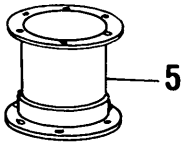
AR - As Required

N.S. - Not Stocked

* Not Stocked - Wire Assemblies are shown for the purpose of reference and identification only and are not available from the Ford New Holland Service Parts System. For field repairs or replacement, we suggest you fabricate locally using the catalog description as a guide.

NOTE: When either Old Style Power Cable (572853 or 572854) is replaced with a New Style Power Cable (796719 or 796720), the other cable must also be ordered.

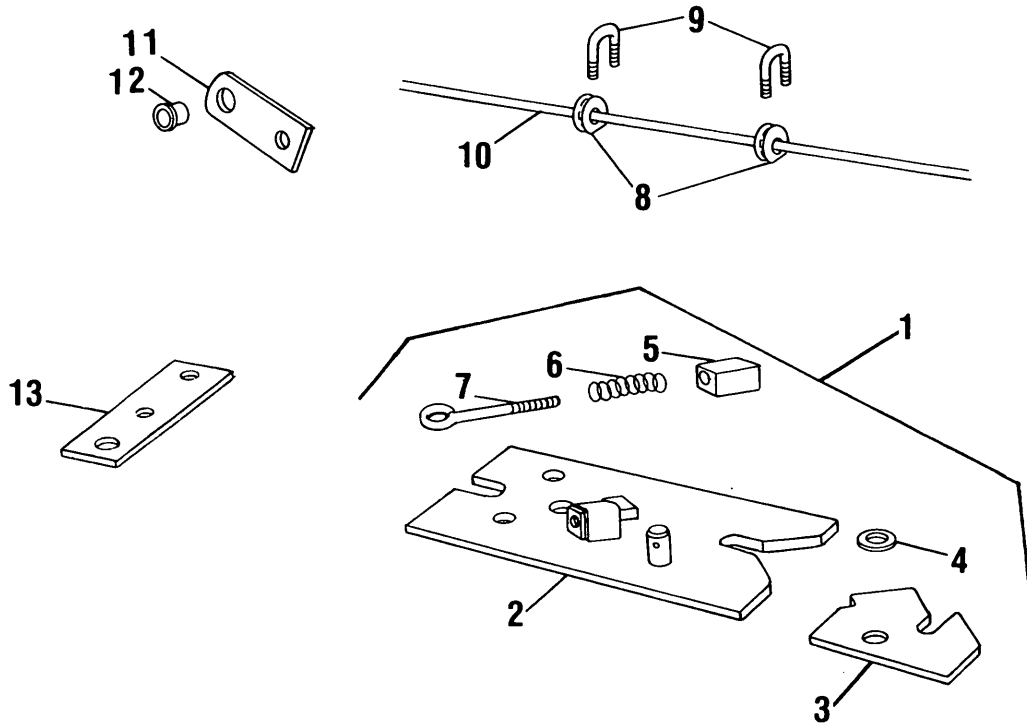
MODEL 34 AND 38 CROP CHOPPERS
VERTICAL AND HORIZONTAL SPOUT EXTENSIONS



Ref. No.	Part No.	No. Used	Description
	*		Horizontal Spout Extension Bundle - 4 Ft. (Includes Ref. Nos. 1 thru 4)
1	238338	1	Brace Weld Assembly 4 88434 Cap Screw, Hex Head, Grade 5, 3/8" x 3/4" 4 88206 Cap Screw, Hex Head, Grade 5, 3/8" x 1" 4 87702 Machine Screw, Flat Head, 3/8" x 1" 12 80702 Washer, 3/8" 12 80680 Lockwasher, 3/8" 12 84944 Nut, 3/8"
2	256476	1	Spout Weld Assembly 6 88434 Cap Screw, Hex Head, Grade 5, 3/8" x 3/4" 4 88206 Cap Screw, Hex Head, Grade 5, 3/8" x 1" 4 87702 Machine Screw, Flat Head, 3/8" x 1" 24 80702 Washer, 3/8" 14 80680 Lockwasher, 3/8" 14 84944 Nut, 3/8"
3	251381	1	Shield 4 87872 Cap Screw, Hex Head, Grade 5, 5/16" x 3/4" 2 80664 Washer, 5/16" 4 80681 Lockwasher, 5/16" 4 84943 Nut, 5/16"
4	164342	1	Cover Plate 2 88833 Carriage Bolt, Grade 5, 1/4" x 1" 1 80701 Washer, 1/4" 2 80682 Lockwasher, 1/4" 2 84878 Wing Nut, 1/4"
5	*	1	Vertical Spout Extension Bundle (Includes Pipe Weld Assembly and Hardware) 1 87414 Lube Fitting, 1/4"-28, Straight, Self-Tapping 6 88206 Cap Screw, Hex Head, Grade 5, 3/8" x 1" 6 80680 Lockwasher, 3/8" 6 84944 Nut, 3/8"

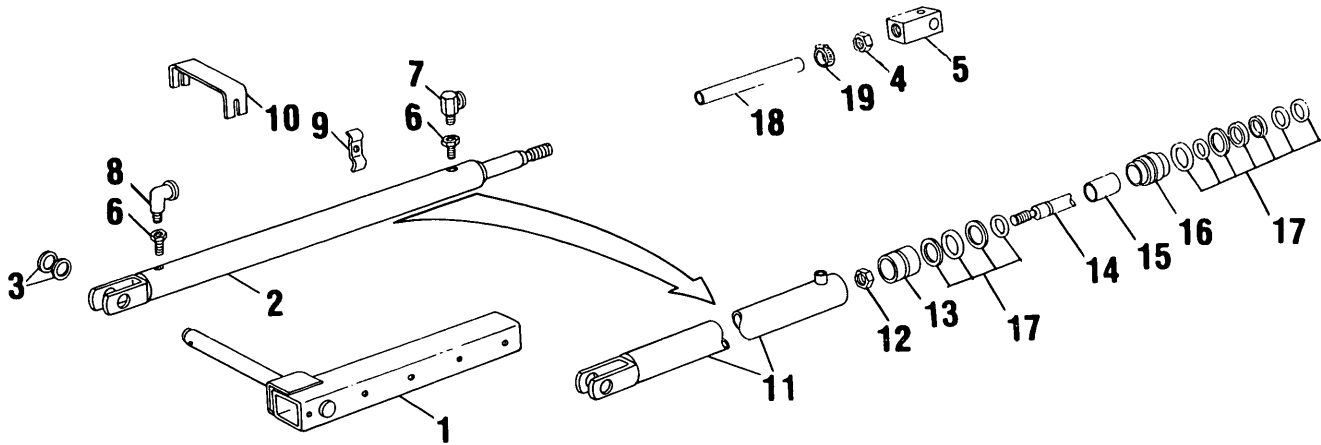
* Order as an attachment

MODEL 34 AND 38 CROP CHOPPERS
OPTIONAL AUTOMATIC HITCH



Ref. No.	Part No.	No. Used	Description
1	218409	1	Automatic Hitch Kit
		1	Automatic Hitch Assembly (Includes Ref. Nos. 2 thru 7) --- Replaces 163063
		2	88551 Cap Screw, Hex Head, Grade 5, 1/2" x 1 3/4"
		1	88693 Cap Screw, Hex Head, Grade 5, 5/8" x 2 3/4"
		1	87337 Cap Screw, Hex Head, Grade 5, 3/4" x 3"
		2	80700 Washer, 1/2"
		1	80299 Washer, 5/8"
		1	84239 Washer, 3/4"
		2	88871 Locknut, Grade C, 1/2"
		1	47832 Locknut, Grade C, 5/8"
		1	280375 Locknut, Grade C, 3/4"
2	213736	1	Hitch Weld Assembly
3	213744	1	Plate
		1	87395 Cotter Pin, 1/8" x 1 1/4"
4	26301	1	Washer
5	213737	1	Block
6	37193	1	Spring
7	25667	1	Eyebolt
		2	84969 Jam Nut, 3/8"
8	28110	2	Rope Guide
9	28114	2	"U" Bolt
		4	88589 Lockwasher, 3/16"
		4	87304 Nut, 3/16"
10	762068	1	Rope, 21' --- Replaces 43240 & 248325
11	718832	2	Bracket and Grommet Assembly --- Replaces 137413
		2	88206 Cap Screw, Hex Head, Grade 5, 3/8" x 1"
		2	80680 Lockwasher, 3/8"
		2	84944 Nut, 3/8"
12	709	2	Grommet
13	136697	1	Strip

MODEL 34 AND 38 CROP CHOPPERS
 OPTIONAL HYDRAULIC SPOUT CONTROL



Ref. No.	Part No.	No. Used	Description
1	182201	1	Hydraulic Spout Control Bundle Shaft Bracket Weld Assembly 1 80754 Cotter Pin, 3/16" x 1 1/2" 1 88206 Cap Screw, Hex Head, Grade 5, 3/8" x 1" 1 88547 Cap Screw, Hex Head, Grade 5, 3/8" x 4" 1 88272 Cap Screw, Hex Head, Grade 5, 1/2" x 4" 1 80702 Washer, 3/8" 1 80700 Washer, 1/2" 1 80680 Lockwasher, 3/8" 1 80679 Lockwasher, 1/2" 1 84944 Nut, 3/8" 1 280431 Nut, Grade 5, 1/2" 1 88902 Locknut, Grade C, 3/8"
2	182209	1	Cylinder Assembly (Includes Ref. Nos. 11 thru 25)
3	27531	AR	Washer
4	280963	1	Nut, 1/2" NF
5	138496	1	Block 1 87414 Lube Fitting, 1/4"-28, Straight, Self-Tapping
6	509957	2	Bushing, 1/2" x 1/4"
7	179755	1	Adapter Union (Restricting w/.032" Dia. Orifice)
8	509984	1	Street Elbow, 90°
9	42365	4	Clamp 4 88865 Bolt, Round Head, Short Square Neck, Grade 5, 3/8" x 1 1/4" 4 80680 Lockwasher, 3/8" 4 84944 Nut, 3/8"
10	181197	1	Bracket
11	N.S.S.	1	Tube Assembly
12	87310	1	Jam Nut, 9/16"
13	182923	1	Piston
14	182922	1	Rod
15	N.S.S.	1	Bushing
16	182925	1	Head Assembly, Includes Bushing, "O" Rings and Lock Rings
17	200612	1	Seal Repair Kit, Includes "O" Rings, Washers and Lock Rings
18	236661	1	Tube
19	513309	1	Clamp

AR - As Required

N.S.S. - Not Serviced Separately

MODEL 34 AND 38 CROP CHOPPERS
 DEALER INFORMATION ONLY
 RECOMMENDED INITIAL PARTS STOCK

DESCRIPTION	PART NO.	QUANTITY FOR 5 MACHINES	
		34	38
SPRING	26981	1	1
SPIDER AND BEARING	29214	2	2
SPRING	29579	1	1
SET SCREW	34418	1	1
SPRING	34490	1	
QUICK DETACHABLE YOKE	34780	1	1
SEAL	36310	2	2
NEEDLE BEARING	36433		2
INNER RACE	36434		1
SPACER	36436	2	2
BEARING CUP	36723	3	3
BEARING CONE	36724	1	1
BEARING CUP	36725	1	1
BEARING CONE	36726	3	3
SEAL	36727	2	2
BALL BEARING	38766	2	2
COLLAR	38767	2	2
"X" WASHER	40305	1	1
COLLAR	45393	2	2
COLLAR	45876	1	1
SPACER	46710	10	12
PIN, CLUTCH DOG	46789	2	2
KNIFE	46811	3	3
SHEAR PLATE, STRAIGHT	46818	1	1
SHEAR PLATE, CURVED	46819	1	1
SEAL	46886	1	1
NEEDLE BEARING	46889	2	2
FLAIL	49945	20	24
IDLER	56014	1	1
BELT SET	56213		1
BEARING LOCKNUT	58104	1	1
"V" BELT	64218	1	
PADDLE	65696	3	3
WASHER	130358	20	24
FLAIL BOLT	167053	20	24
CLUTCH DOG	218527	2	2
YOKE PIN	236068	1	1
SPROCKET AND HOLDER	705422	1	1

NUMERICAL PARTS INDEX

PART NUMBER	REF.	PAGE	PART NUMBER	REF.	PAGE	PART NUMBER	REF.	PAGE
102046	10	43	195077	5	25	25939	18	25
103060	26	19	196033		12	26260	15	41
115040	9	15	198219	9	7	26301	25	37
115680		40	200612	17	46		4	45
122398	2	37	213736	2	45	26312	7	15
122483	1	11	213737	5	45	26392	6	10
122493	7	37	213744	3	45	26538	7	11
122499	16	37	217229	6	12	26981	5	7
126162	8	10	217391	4	11	27084		40
126697	3	37	217392	3	11	271431		43
126760	3	19	218409	1	45	272850	19	17
127434	4	19	218527	12	19	27503		7
128375	6	11	218784	8	11	27531	3	46
128437	11	10	222781	2	43	27696	14	25
		11	222782	3	43		10	27
129344	13	11	222785	3	40	27965	19	25
129345	14	11	224894	16	41	28110	25	7
130358		25	224895	25	41		15	35
132158	5	12	225180	28	41		8	39
133246	29	41	225183	27	41		31	41
134489	17	12	226013	10	37		8	45
134836	7	23	228519	22	41	28114	26	7
136678	5	40	228661	23	41		16	35
136682	7	35	228662	21	41		9	39
136684	23	37	229101	19	41		32	41
	7	41	236068	4	7		9	45
136696	10	35	236661	18	46	285148	13	12
136697	13	45	237219	10	41	285294	1	12
136708	19	37	237294	5	43	285296	19	31
138243	24	37	237299	14	43	285298	2	19
	35	41	237548	11	41	285301	19	31
138496	5	46	237980	17	43	285688	1	43
138539	34	21	238338	1	44	285839	3	35
141781	9	17	238657	10	39	285840	4	35
	36	21		4	40	287391	5	35
	22	25	238943	18	41	288207	12	37
144179	6	19	241104	24	41		3	39
145458		33	241296	2	11	288211	11	37
		39	245743	2	27	288213	14	37
15081	18	37	247780		9	288215	9	33
163902	5	11			19	289783	33	41
164342	6	35			25	29212	12	7
	4	44			27	29214	6	7
164448	13	43			29	29526	4	37
167053	3	25			31	29534	17	41
167169		39			32	29579	8	35
169666	7	10			33	29852	15	7
169702	12	11	249127	11	23	32307	7	19
174620	15	43	249130	12	12		6	37
178297	25	19	249154	13	29	32383		12
178299	27	19	251381	3	44	33261	9	41
179035	24	19	25457	35	21	33781	13	37
179755	7	46	25464	11	15	34187	11	35
179908	6	17	254643	2	40		26	37
179914	13	17	256476	2	44	34418	13	7
181197	10	46	25667	7	45	34455	9	10
182201	1	46	256873		39		14	35
182209	2	46	25809		25	34490	33	21
182922	14	46			27	34780	2	7
182923	13	46	25813		25	35717	17	37
182925	16	46			27	35781	5	37
189759	8	13	25818		25	36310	17	25
195036	9	13			27	36433	28	19
195056	37	21	25936	20	7	36434	29	19

CONTINUE

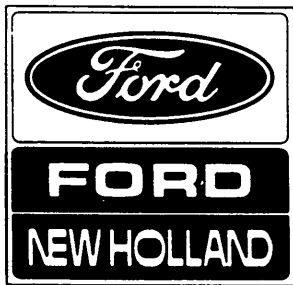
NUMERICAL PARTS INDEX (CONTINUED)

PART NUMBER	REF.	PAGE	PART NUMBER	REF.	PAGE	PART NUMBER	REF.	PAGE
36436	18	7	46756	14	29	48921	30	21
36464	2	10	46760	3	29	49063	25	17
36723	4	12	46761	1	29	49064	25	17
36724	9	12	46765	1	15	49065	24	17
36725	8	12	46778	24	17	49066	24	17
36726	3	12	46779	25	17	49894	20	41
36727	2	12	46781	19	23	49928	4	25
36835	34	21	46789	13	19	49945	1	25
	21	31	46790	20	17	49946	1	25
	13	33	46791	15	19	49956	10	10
36993	22	37	46803	2	17	49967	13	25
	8	41	46805	8	17	49968	12	25
37185	16	27	46807	4	17		17	27
37193	6	45	46809	16	17	49971	14	27
37326	19	17	46810	18	17	49973	11	25
37851		37	46811	12	23	50256	16	12
	15	37	46815	11	29	50600	9	11
		41	46818	16	29	50672	26	31
38231	13	33	46819	15	29	50677	12	29
38283	12	33	46826	11	19	50690	11	29
38766	4	27	46830	14	15	50780	12	29
38767	5	27	46833	14	23	509957	6	46
39374	16	19	46836	6	23	513309	19	46
40305	3	7	46853	11	27	516914	3	17
42365	20	15	46871	14	12	52024	23	19
	9	46	46876	15	12	52092	5	25
42369	19	15	46886	5	17	523282		27
43048	3	27	46889	16	25	52338	38	21
43414	32	21	46921	1	32	52475	12	15
44322	17	7	46922	12	17	528735	2	11
45217		19	46932	20	17	56014	15	25
45393	7	25	46933	20	17	56211	4	13
45876	10	23	46953	4	29	56212	19	19
45960	14	41	46962	15	27	56213	19	19
46432		39	46972	13	35	56235	14	15
46522	12	27	46984	1	13	56236	18	19
46655	21	7	47027	18	31	56237	11	25
46657	3	15	47036	7	13	56323	7	17
46658	2	15	47040	5	33	56324	17	17
46661	22	7	47054	25	31	56331	7	29
46663	28	7	47059	4	32	56364	12	25
46664	10	33	47065	14	33		17	27
46669	27	7	47084	5	29	56389	18	19
46670	13	15	47090	15	33	56832	31	21
46674	9	29	47111		23	570950		23
46675	15	15	47142	2	29	575943	34	41
46678	6	13	47170	16	15	576242	1	40
46679	5	13	47173	6	29	577767	26	41
46680	4	13	47179	17	15	578471	6	43
46684	25	17	47180	18	15	579113	8	7
46685	29	7	47192	16	7	579816	15	23
46686	24	17		15	17	58067	1	23
46688	6	15	47221	24	31	58104	5	23
46689	2	13	47568	17	31	58105	4	23
46695	8	15	47832		25	58106	22	19
46708	10	29	47941	8	7	58131	20	19
46710	2	25	48036	21	19	58166	6	33
46722	21	17	48206	30	9	59273		39
46724	4	15	48210	28	31	602530	17	35
46734	20	25	48213	26	31	602996	9	43
46735	21	25	48454	1	37	602997	4	43
46741	2	32	48645	17	23	60485		43
46751	23	7	48688	13	23	608186	24	7
46754	9	27	48689	18	23	613988	8	43

CONTINUE

NUMERICAL PARTS INDEX (CONTINUED)

PART NUMBER	REF.	PAGE	PART NUMBER	REF.	PAGE	PART NUMBER	REF.	PAGE
622265	12	11	782336	26	31			
626246	11	10	782338	31	31			
		11	782340	27	31			
626502	1	11	782343	6	33			
627771	5	19	782344	4	32			
63646	10	25	784243	32	9			
636665		39	784539		43			
		43	786257	2	39			
636666		39	787868	18	43			
		43	788354	33	21			
64218	19	19	796719	16	43			
643201	5	39	796720	11	43			
643202	12	43	847590	10	13			
646056	2	35		7	39			
64974	37	21	851968	5	10			
65319		25	854381	23	37			
65694	3	32	854382	20	37			
65696	16	23		6	41			
65716	8	27	854385	12	41			
65717	6	27	854387	3	35			
65918	5	15	854994	12	10			
66271	18	23	855141	2	7			
66812	30	41	855499		10			
66961	17	23	855716		7			
672	8	37	855717		7			
67469	10	11	855718		7			
67544	1	27	855719		7			
67545	1	27	856120		7			
67553	8	29	856121		7			
67978	21	37	856122		7			
688048	1	35	856621	1	7			
691788	8	25	857026	1	10			
691790	2	23	857027	3	10			
691791	8	23	857310	3	13			
697331	40	21	861180	18	35			
702764	31	9	9600731	11	7			
703679	14	17	9600732	7	7			
703680	1	17						
703681		17						
704303	19	7						
704452	39	21						
705422	10	19						
705423	17	19						
705430	1	19						
708182	6	39						
709	12	45						
710638	12	13						
	16	33						
710640	11	33						
712742	7	12						
718832	11	45						
72871	4	10						
762068	10	45						
764833	12	35						
764837	9	35						
767455	4	39						
767456	19	43						
767893	1	39						
767894	5	35						
768120	7	43						
782251	30	31						
782252	25	31						
782316	1	13						
782332	8	33						



REPLACES ALL PREVIOUS ISSUES